

Recombinant Human CTSZ Protein, Myc/DDK-tagged, C13 and N15-labeled

Cat. No. CTSZ-2085H **Lot. No.** (See product label)

SPECIFICATION

Product Overview	CTSZ MS Standard C13 and N15-labeled recombinant protein (NP_001327) with a C-terminal MYC/DDK tag, was expressed in HEK293 cells.
Species	Human
Source	HEK293
ProteinLength	1-303 aa
Description	The protein encoded by this gene is a lysosomal cysteine proteinase and member of the peptidase C1 family. It exhibits both carboxy-monopeptidase and carboxy-dipeptidase activities. The encoded protein has also been known as cathepsin X and cathepsin P. This gene is expressed ubiquitously in cancer cell lines and primary tumors and, like other members of this family, may be involved in tumorigenesis.
Molecular Mass	33.9 kDa
AA Sequence	MARRGPGWRPLLLLVLLAGAAQGGLYFRRGQTCYRPLRGDGLAPLGRSTYPRPHE YLSPADLPKSWDWRNV DGVNYASITRNQHIPQYCGSCWAHASTSAMADRINIKRKG AWPSTLLSVQNVIDCGNAGSCEGGNDLSVWDYAHQH GIPDET C NNYQAKDQECDK FNQCGTCNEFKECHAIRNYTLWRVGDYGSLSGREKMMAEIYANGPISCGIMATERL ANYTGGIYA EYQDTTYINHVVSVAGWGISDGTEYWIVRNSWGEPWGERGWLRIVTS TYKDGKGARYNLAIEEHCTFGDPIVTRTRPLEQKLISEEDLAANDILDYKDDDDKV

 Tel: 1-631-559-9269 1-516-512-3133

 Email: info@creative-biomart.com  Fax: 1-631-938-8127

 45-1 Ramsey Road, Shirley, NY 11967, USA

Purity	> 80% as determined by SDS-PAGE and Coomassie blue staining
Stability	Stable for 3 months from receipt of products under proper storage and handling conditions.
Storage	Store at -80 centigrade. Avoid repeated freeze-thaw cycles.
Concentration	50 µg/mL as determined by BCA
Storage Buffer	100 mM glycine, 25 mM Tris-HCl, pH 7.3.

GENE INFORMATION

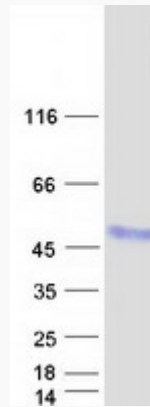
Gene Name	CTSZ cathepsin Z [Homo sapiens (human)]
Official Symbol	CTSZ
Synonyms	CTSZ; cathepsin Z; carboxypeptidase LB; cathepsin B2; cathepsin IV; cathepsin X; cathepsin Y; cathepsin Z1; CTSX; cysteine type carboxypeptidase; lysosomal carboxypeptidase B; cathepsin P; preprocathepsin P; cysteine-type carboxypeptidase; FLJ17088;
Gene ID	1522
mRNA Refseq	NM_001336
Protein Refseq	NP_001327
MIM	603169
UniProt ID	Q9UBR2

 Tel: 1-631-559-9269 1-516-512-3133

 Email: info@creative-biomart.com  Fax: 1-631-938-8127

 45-1 Ramsey Road, Shirley, NY 11967, USA

SDS-PAGE



 Tel: 1-631-559-9269 1-516-512-3133

 Email: info@creative-biomart.com  Fax: 1-631-938-8127

 45-1 Ramsey Road, Shirley, NY 11967, USA