

Recombinant Human CTSZ Protein, GST-tagged

Cat. No. CTSZ-2120H **Lot. No.** (See product label)

SPECIFICATION

Product Overview	Human CTSZ full-length ORF (NP_001327.2, 1 a.a. - 303 a.a.) recombinant protein with GST-tag at N-terminal.
Species	Human
Source	Wheat Germ
ProteinLength	1-303 aa
Description	The protein encoded by this gene is a lysosomal cysteine proteinase and member of the peptidase C1 family. It exhibits both carboxy-monopeptidase and carboxy-dipeptidase activities. The encoded protein has also been known as cathepsin X and cathepsin P. This gene is expressed ubiquitously in cancer cell lines and primary tumors and, like other members of this family, may be involved in tumorigenesis. [provided by RefSeq, Oct 2008]
Molecular Mass	58.96 kDa
AA Sequence	MARRGPGWRPLLLLVLLAGAAQGGLYFRRGQTCYRPLRGDGLAPLGRSTYPRPHE YLSPADLPKSWDWRNVDGVNYASITRNQHQPQYCGSCWAHASTSAMADRINIKRKG AWPSTLLSVQNVIDCGNAGSCEGGNDLSVWDYAHQHGIPDETCNNYQAKDQECDK FNQCGTCNEFKECHAIRNYTLWRVGDYGSLSGREKMMAEIYANGPISCGIMATERL ANYTGGIYAHEYQDTTYINHVVSVAGWGISDGTEYWIVRNSWGEPWGERGWLRIVTS TYKDGKGARYNLAIEEHCTFGDPIV

 Tel: 1-631-559-9269 1-516-512-3133

 Email: info@creative-biomart.com  Fax: 1-631-938-8127

 45-1 Ramsey Road, Shirley, NY 11967, USA

Applications	Enzyme-linked Immunoabsorbent Assay Western Blot (Recombinant protein) Antibody Production Protein Array
Notes	Best use within three months from the date of receipt of this protein.
Storage	Store at -80 centigrade. Aliquot to avoid repeated freezing and thawing.
Storage Buffer	50 mM Tris-HCl, 10 mM reduced Glutathione, pH=8.0 in the elution buffer.
GENE INFORMATION	
Gene Name	CTSZ cathepsin Z [Homo sapiens]
Official Symbol	CTSZ
Synonyms	CTSZ; cathepsin Z; carboxypeptidase LB; cathepsin B2; cathepsin IV; cathepsin X; cathepsin Y; cathepsin Z1; CTSX; cysteine type carboxypeptidase; lysosomal carboxypeptidase B; cathepsin P; preprocathepsin P; cysteine-type carboxypeptidase; FLJ17088;
Gene ID	1522
mRNA Refseq	NM_001336
Protein Refseq	NP_001327
MIM	603169
UniProt ID	Q9UBR2

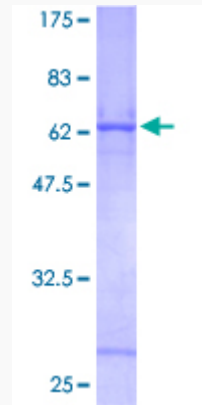
 Tel: 1-631-559-9269 1-516-512-3133

 Email: info@creative-biomart.com  Fax: 1-631-938-8127

 45-1 Ramsey Road, Shirley, NY 11967, USA

Quality Control

Testing:



12.5% SDS-PAGE Stained with Coomassie Blue.

 Tel: 1-631-559-9269 1-516-512-3133

 Email: info@creative-biomart.com  Fax: 1-631-938-8127

 45-1 Ramsey Road, Shirley, NY 11967, USA