

# Recombinant Human CTTN Protein, Myc/DDK-tagged, C13 and N15-labeled

**Cat. No.** CTTN-6371H    **Lot. No.** (See product label)

## SPECIFICATION

<b>Product Overview</b>	CTTN MS Standard C13 and N15-labeled recombinant protein (NP_612632) with a C-terminal MYC/DDK tag, was expressed in HEK293 cells.
<b>Species</b>	Human
<b>Source</b>	HEK293
<b>Description</b>	This gene is overexpressed in breast cancer and squamous cell carcinomas of the head and neck. The encoded protein is localized in the cytoplasm and in areas of the cell-substratum contacts. This gene has two roles: (1) regulating the interactions between components of adherens-type junctions and (2) organizing the cytoskeleton and cell adhesion structures of epithelia and carcinoma cells. During apoptosis, the encoded protein is degraded in a caspase-dependent manner. The aberrant regulation of this gene contributes to tumor cell invasion and metastasis. Three splice variants that encode different isoforms have been identified for this gene.
<b>Molecular Mass</b>	57.5 kDa
<b>AA Sequence</b>	MWKASAGHAVSIAQDDAGADDWETPDFVNDVSEKEQRWGAKTVQGSGHQEHIN IHLKRENVFQEHQTLKEKELETGPKASHGYGGKFGVEQDRMDKSAVGHEYQSKLS KHCSQVDSVRGFGGKFGVQMDRVDQSAVGFEYQGKTEKHASQKDYSSGFGGKY GVQADRVDKSAVGFDYQGKTEKHESQRDYSKGFGGKYGIDKDKVDSAVGFEYQ GKTEKHESQKDYVKGFGGKFGVQTRQDKCALGWDHQEKLQLHESQKDYSKGFG

 Tel: 1-631-559-9269    1-516-512-3133

 Email: [info@creative-biomart.com](mailto:info@creative-biomart.com)     Fax: 1-631-938-8127

 45-1 Ramsey Road, Shirley, NY 11967, USA

GKYGVQKDRMDKNASTFEDVTQVSSAYQKTVPEAVTSKTSNIRANFENLAKEKEQ  
 EDRRKAEAERAQRMAKERQEQQEEARRKLEEQARAKTQTPPVSPAPQPTEERLPSS  
 PVYEDAASFKAELSYRGPVSGTEPEPVYSMEAADYREASSQQGLAYATEAVYESAE  
 APGHYPAEDSTYDEYENDLGITAVALYDYQAAGDDEISFDPDDIITNIEMIDDGWWR  
 GVCKGRYGLFPANYVELRQTRTRPLEQKLISEEDLAANDILDYKDDDDKV

**Purity** > 80% as determined by SDS-PAGE and Coomassie blue staining

**Stability** Stable for 3 months from receipt of products under proper storage and handling conditions.

**Storage** Store at -80 centigrade. Avoid repeated freeze-thaw cycles.

**Concentration** 50 µg/mL as determined by BCA

**Storage Buffer** 100 mM glycine, 25 mM Tris-HCl, pH 7.3.

## GENE INFORMATION

**Gene Name** [CTTN cortactin \[ Homo sapiens \(human\) \]](#)

**Official Symbol** [CTTN](#)

**Synonyms** CTTN; cortactin; EMS1, ems1 sequence (mammary tumor and squamous cell carcinoma associated (p80/85 src substrate); src substrate cortactin; amplexin; 1110020L01Rik; oncogene EMS1; ems1 sequence (mammary tumor and squamous cell carcinoma-associated (p80/85 src substrate); EMS1; FLJ34459;

**Gene ID** [2017](#)

**mRNA Refseq** [NM\\_138565](#)

 Tel: 1-631-559-9269 1-516-512-3133

 Email: [info@creative-biomart.com](mailto:info@creative-biomart.com)  Fax: 1-631-938-8127

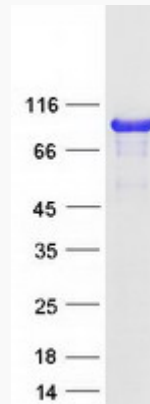
 45-1 Ramsey Road, Shirley, NY 11967, USA

**Protein Refseq** NP\_612632

**MIM** 164765

**UniProt ID** Q14247

**SDS-PAGE**



 Tel: 1-631-559-9269 1-516-512-3133

 Email: [info@creative-biomart.com](mailto:info@creative-biomart.com)  Fax: 1-631-938-8127

 45-1 Ramsey Road, Shirley, NY 11967, USA