

Recombinant *Vibrio cholerae* serotype O1 CTXB protein, His-tagged

Cat. No. CTXB-388V **Lot. No.** (See product label)

SPECIFICATION

Product Overview	Recombinant <i>Vibrio cholerae</i> serotype O1 CTXB protein (Thr22-Asn124), fused to His tag at C-terminus, was expressed in human 293 cells (HEK293).
Species	<i>Vibrio cholerae</i> serotype O1
Source	HEK293
ProteinLength	103
Description	Cholera enterotoxin subunit B (CTXB) is also known as cholera enterotoxin B chain, cholera enterotoxin gamma chain and cholera toxin B subunit. <i>Vibrio cholerae</i> O1 exists as two major serotypes, Inaba and Ogawa, which are associated with the O antigen of the lipopolysaccharide and are capable of unequal reciprocal interconversion. The B subunit pentameric ring directs the A subunit to its target by binding to the GM1 gangliosides present on the surface of the intestinal epithelial cells. CTXB can bind five GM1 gangliosides. Also, it has no toxic activity by itself.
Form	Lyophilized from 0.22 um filtered solution in PBS, pH7.4, 10% trehalose.
Molecular Mass	The protein has a calculated MW of 13.5 kDa. The protein migrates as 18-22 kDa under reducing (R) condition (SDS-PAGE).
Endotoxin	Less than 1.0 EU per ug by the LAL method.

 Tel: 1-631-559-9269 1-516-512-3133

 Email: info@creative-biomart.com  Fax: 1-631-938-8127

 45-1 Ramsey Road, Shirley, NY 11967, USA

Purity	>90% as determined by SDS-PAGE.
Storage	<p>For long term storage, the product should be stored at lyophilized state at -20 centigrade or lower.</p> <p>Please avoid repeated freeze-thaw cycles.</p> <p>This product is stable after storage at:</p> <p>-20 centigrade to -70 centigrade for 12 months in lyophilized state; -70 centigrade for 3 months under sterile conditions after reconstitution.</p>
Reconstitution	It is recommended that sterile water be added to the vial to prepare a stock solution of 0.2 ug/ul. Centrifuge the vial at 4°C before opening to recover the entire contents.

GENE INFORMATION

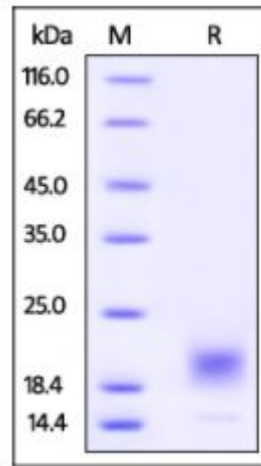
Gene Name	VC1456
Official Symbol	VC1456
Synonyms	CTXB, TOXB
Gene ID	2613962
Protein Refseq	NP_231099.1
UniProt ID	P01556

 Tel: 1-631-559-9269 1-516-512-3133

 Email: info@creative-biomart.com  Fax: 1-631-938-8127

 45-1 Ramsey Road, Shirley, NY 11967, USA

**SDS-PAGE of CTXB-
388V**



Vibrio cholerae serotype O1 CTXB, His Tag on SDS-PAGE under reducing (R) condition. The gel was stained overnight with Coomassie Blue. The purity of the protein is greater than 90%.

 Tel: 1-631-559-9269 1-516-512-3133

 Email: info@creative-biomart.com  Fax: 1-631-938-8127

 45-1 Ramsey Road, Shirley, NY 11967, USA