

Recombinant Human CUEDC1 Protein, GST-tagged

Cat. No. CUEDC1-2125H Lot. No. (See product label)

SPECIFICATION

Product Overview	Human CUEDC1 full-length ORF (NP_060419.1, 1 a.a. - 386 a.a.) recombinant protein with GST-tag at N-terminal.
Species	Human
Source	Wheat Germ
Description	CUEDC1 (CUE Domain Containing 1) is a Protein Coding gene.
Molecular Mass	68.7 kDa
AA Sequence	MTSLFRRSSSGSGGGGTAGARGGGGGTAAPQELNNSRPARQVRRLEFNQAMDDF KTMFPNMDYDIIECVLRANSGAVDATIDQLLQMNLEGGGSSGGVYEDSSDSEDSIPP EILERTLEPDSSDEEPPPVSPPAYHMHVFDRPYPLAPPTPPPRIDALGSGAPTSQR RYRNWNPLLGNLPDDFLRILPQQLDISIQGNAGGPKPGSGEGCPPAMAGPGPGDQ ESRWKQYLEDERIALFLQNEEFMKELQRNRDFFLLALERDRLKYESQKSKSSSVAVG NDFGFSSPVPGTGDANPAVSEDALFRDKLKHMGKSTRRKL FELARAFSEKTKMRKS KRKHLKHKQSLGAAASTANLLDDVEGHACDEDFRGRRQEAPKVEEGLREGQ
Applications	Enzyme-linked Immunoabsorbent Assay Western Blot (Recombinant protein) Antibody Production Protein Array
Notes	Best use within three months from the date of receipt of this protein.

 Tel: 1-631-559-9269 1-516-512-3133

 Email: info@creative-biomart.com  Fax: 1-631-938-8127

 45-1 Ramsey Road, Shirley, NY 11967, USA

Storage Store at -80 centigrade. Aliquot to avoid repeated freezing and thawing.

Storage Buffer 50 mM Tris-HCl, 10 mM reduced Glutathione, pH=8.0 in the elution buffer.

GENE INFORMATION

Gene Name CUEDC1 CUE domain containing 1 [Homo sapiens]

Official Symbol CUEDC1

Synonyms CUEDC1; CUE domain containing 1; CUE domain-containing protein 1; FLJ20739; DKFZp547L163;

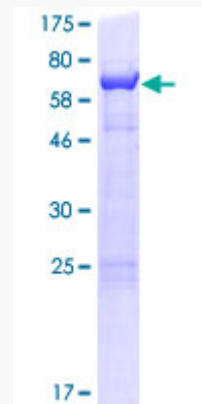
Gene ID 404093

mRNA Refseq NM_017949

Protein Refseq NP_060419

UniProt ID Q9NWM3

Quality Control Testing:



 Tel: 1-631-559-9269 1-516-512-3133

 Email: info@creative-biomart.com  Fax: 1-631-938-8127

 45-1 Ramsey Road, Shirley, NY 11967, USA



12.5% SDS-PAGE Stained with Coomassie Blue.

 Tel: 1-631-559-9269 1-516-512-3133

 Email: info@creative-biomart.com  Fax: 1-631-938-8127

 45-1 Ramsey Road, Shirley, NY 11967, USA