

# Recombinant Human CUEDC1 Protein, Myc/DDK-tagged, C13 and N15-labeled

**Cat. No.** CUEDC1-580H    **Lot. No.** (See product label)

## SPECIFICATION

<b>Product Overview</b>	CUEDC1 MS Standard C13 and N15-labeled recombinant protein (NP_060419) with a C-terminal MYC/DDK tag, was expressed in HEK293 cells.
<b>Species</b>	Human
<b>Source</b>	HEK293
<b>Description</b>	CUEDC1 (CUE Domain Containing 1) is a Protein Coding gene. Diseases associated with CUEDC1 include Proximal Symphalangism and Perrault Syndrome.
<b>Molecular Mass</b>	42.3 kDa
<b>AA Sequence</b>	<p>MTSLFRRSSSGSGGGGTAGARGGGGGTAAPQELNNSRPARQVRRLEFNQAMDDF            KTMFPNMDYDIIECVLRANS GAVDATIDQLLQMNLEGGGSSGGVYEDSSDSEDSIPP            EILERTLEPDSSDEEPPPVSPPAYHMHVFDRPYPLAPPTPPPRIDALGSGAPTSQR            RYRNWNPPLLGNLPDDFLRILPQQLD SIQGNAGGPKPGSGEGCPPAMAGPGPGDQ            ESRWKQYLEDERIALFLQNEEFMKELQRNRD L LALERDRLKYESQKSKSSSVAVG            NDFGFSSPVPGTGDANPAVSEDALFRDKLKHMGKSTRRKL FELARAFSEKTKMRKS            KRKHLLKHQSLGAAASTANLLDDVEGHACDEDFRGRRQEAPKVEEGLREGQSGPT            RTRPLEQKLISEEDLAANDILDYKDDDDKV</p>
<b>Purity</b>	> 80% as determined by SDS-PAGE and Coomassie blue staining
<b>Stability</b>	Stable for 3 months from receipt of products under proper storage and handling

 Tel: 1-631-559-9269    1-516-512-3133

 Email: [info@creative-biomart.com](mailto:info@creative-biomart.com)     Fax: 1-631-938-8127

 45-1 Ramsey Road, Shirley, NY 11967, USA

conditions.

**Storage** Store at -80 centigrade. Avoid repeated freeze-thaw cycles.

**Concentration** 50 µg/mL as determined by BCA

**Storage Buffer** 100 mM glycine, 25 mM Tris-HCl, pH 7.3.

## GENE INFORMATION

**Gene Name** CUEDC1 CUE domain containing 1 [ Homo sapiens (human) ]

**Official Symbol** CUEDC1

**Synonyms** CUEDC1; CUE domain containing 1; CUE domain-containing protein 1; FLJ20739; DKFZp547L163;

**Gene ID** 404093

**mRNA Refseq** NM\_017949

**Protein Refseq** NP\_060419

**UniProt ID** Q9NWM3

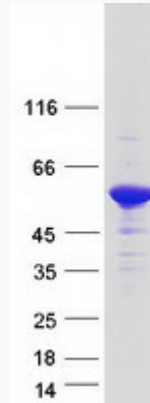
 Tel: 1-631-559-9269 1-516-512-3133

 Email: [info@creative-biomart.com](mailto:info@creative-biomart.com)  Fax: 1-631-938-8127

 45-1 Ramsey Road, Shirley, NY 11967, USA



SDS-PAGE



Tel: 1-631-559-9269 1-516-512-3133

Email: [info@creative-biomart.com](mailto:info@creative-biomart.com) Fax: 1-631-938-8127

45-1 Ramsey Road, Shirley, NY 11967, USA