

Recombinant Human CUEDC2 Protein, GST-tagged

Cat. No. CUEDC2-2126H **Lot. No.** (See product label)

SPECIFICATION

| | |
|-------------------------|---|
| Product Overview | Human CUEDC2 full-length ORF (NP_076945.1, 1 a.a. - 226 a.a.) recombinant protein with GST-tag at N-terminal. |
| Species | Human |
| Source | Wheat Germ |
| Description | CUEDC2 (CUE Domain Containing 2) is a Protein Coding gene. Among its related pathways are DNA Damage and Toll-like Receptor Signaling Pathway. |
| Molecular Mass | 51.1 kDa |
| AA Sequence | MELERIVSAALLAFVQTHLPEADLSGLDEVIFSYVLGVLEDLGPSPGPSEENFDMEAFT EMMEAYVPGFAHIPRGTIGDMMQKLSGQLSDARNKENLQPQSSGVQGQVPISPEPL QRPEMLKEETRSSAAAAADTQDEATGAEELLPGVDVLLVFPTCSVEQAQWVLAK ARGDLEEAVQMLVEGKEEGPAAWEGPNQDLPRRLRGPQKDELKSFILQKYMMVDS A |
| Applications | Enzyme-linked Immunoabsorbent Assay Western Blot (Recombinant protein) Antibody Production Protein Array |
| Notes | Best use within three months from the date of receipt of this protein. |

 Tel: 1-631-559-9269 1-516-512-3133

 Email: info@creative-biomart.com  Fax: 1-631-938-8127

 45-1 Ramsey Road, Shirley, NY 11967, USA

Storage Store at -80 centigrade. Aliquot to avoid repeated freezing and thawing.

Storage Buffer 50 mM Tris-HCl, 10 mM reduced Glutathione, pH=8.0 in the elution buffer.

GENE INFORMATION

Gene Name CUEDC2 CUE domain containing 2 [Homo sapiens]

Official Symbol CUEDC2

Synonyms C10orf66; bA18l14.5

Gene ID 79004

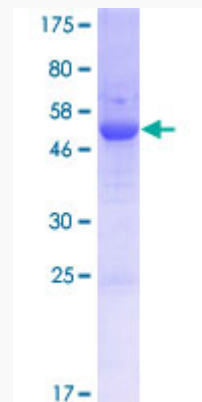
mRNA Refseq NM_024040.2

Protein Refseq NP_076945.2

MIM 614142

UniProt ID Q9H467

Quality Control Testing:



 Tel: 1-631-559-9269 1-516-512-3133

 Email: info@creative-biomart.com  Fax: 1-631-938-8127

 45-1 Ramsey Road, Shirley, NY 11967, USA



12.5% SDS-PAGE Stained with Coomassie Blue.

 Tel: 1-631-559-9269 1-516-512-3133

 Email: info@creative-biomart.com  Fax: 1-631-938-8127

 45-1 Ramsey Road, Shirley, NY 11967, USA