

Recombinant Human CUEDC2 Protein, Myc/DDK-tagged, C13 and N15-labeled

Cat. No. CUEDC2-5282H Lot. No. (See product label)

SPECIFICATION

Product Overview

CUEDC2 MS Standard C13 and N15-labeled recombinant protein (NP_076945) with a C-terminal MYC/DDK tag, was expressed in HEK293 cells.

Species

Human

Source

HEK293

Description

Down-regulates ESR1 protein levels through the ubiquitination-proteasome pathway, regardless of the presence of 17 beta-estradiol. Also involved in 17 beta-estradiol-induced ESR1 degradation. Controls PGR protein levels through a similar mechanism.

Molecular Mass

24.7 kDa

AA Sequence

MELERIVSAALLAFVQTHLPEADLSGLDEVIFSIVLGVLEDLGPSGPSEENFDMEAFT
EMMEAYVPGFAHIPRGTIGDMMQKLSGQLSDARNKENLQPQSSGVQGQVPISPEPL
QRPEMLKEETRSSAAAAADTQDEATGAEEELLPGVDVLLLEVPTCSVEQAQWVLAK
ARGDLEEAVQMLVEGKEEGPAAWEGPNQDLPRRLRGPQKDELKSFILQKYMMDVDS
ATTRTRPLEQKLISEEDLAANDILDYKDDDDKV

Purity

> 80% as determined by SDS-PAGE and Coomassie blue staining

Stability

Stable for 3 months from receipt of products under proper storage and handling conditions.

Tel: 1-631-559-9269 1-516-512-3133

Email: info@creative-biomart.com Fax: 1-631-938-8127

45-1 Ramsey Road, Shirley, NY 11967, USA

| | |
|----------------|---|
| Storage | Store at -80 centigrade. Avoid repeated freeze-thaw cycles. |
|----------------|---|

| | |
|----------------------|-------------------------------|
| Concentration | 50 µg/mL as determined by BCA |
|----------------------|-------------------------------|

| | |
|-----------------------|---|
| Storage Buffer | 100 mM glycine, 25 mM Tris-HCl, pH 7.3. |
|-----------------------|---|

GENE INFORMATION

| | |
|------------------|---|
| Gene Name | CUEDC2 CUE domain containing 2 [Homo sapiens (human)] |
|------------------|---|

| | |
|------------------------|--------|
| Official Symbol | CUEDC2 |
|------------------------|--------|

| | |
|-----------------|---|
| Synonyms | CUEDC2; CUE domain containing 2; C10orf66; bA18I14.5; CUE domain-containing protein 2 |
|-----------------|---|

| | |
|----------------|-------|
| Gene ID | 79004 |
|----------------|-------|

| | |
|--------------------|-----------|
| mRNA Refseq | NM_024040 |
|--------------------|-----------|

| | |
|-----------------------|-----------|
| Protein Refseq | NP_076945 |
|-----------------------|-----------|

| | |
|------------|--------|
| MIM | 614142 |
|------------|--------|

| | |
|-------------------|--------|
| UniProt ID | Q9H467 |
|-------------------|--------|

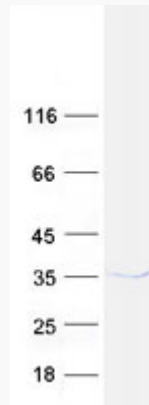
 Tel: 1-631-559-9269 1-516-512-3133

 Email: info@creative-biomart.com  Fax: 1-631-938-8127

 45-1 Ramsey Road, Shirley, NY 11967, USA



SDS-PAGE



☎ Tel: 1-631-559-9269 1-516-512-3133

☎ Email: info@creative-biomart.com ☎ Fax: 1-631-938-8127

☎ 45-1 Ramsey Road, Shirley, NY 11967, USA