

Recombinant Full Length Human CUL1 Protein, C-Flag-tagged

Cat. No. CUL1-1937HFL Lot. No. (See product label)

SPECIFICATION

Product Overview	Recombinant Full Length Human CUL1 Protein, fused to Flag-tag at C-terminus, was expressed in Mammalian cells.
Species	Human
Source	Mammalian Cells
ProteinLength	1-776 a.a.
Description	Predicted to enable ubiquitin protein ligase binding activity and ubiquitin-protein transferase activity. Involved in SCF-dependent proteasomal ubiquitin-dependent protein catabolic process and protein ubiquitination. Located in plasma membrane. Part of Parkin-FBXW7-Cul1 ubiquitin ligase complex and SCF ubiquitin ligase complex.
Form	25 mM Tris HCl, pH 7.3, 100 mM glycine, 10% glycerol.
Molecular Mass	89.5 kDa
AA Sequence	MSSTRSQNP HGLKQIGLDQIWDDL RAGIQQVYTRQSM AKSRYMELYTHVYNYCTSV HQS NQARGAGVPPS KSKKGQTPGGAQFV GLELYKRLKEFLK NYLTNLLKDGEDLM DESVLKFYTTQQWEDYRFSSKVLNGICAYL NRHWVRRECDEGRKGIYEIYSLALVTW RDCLFRPLNKQVTNAVLK LIEKERNGETINTRLISGVVQSYVE LGLNEDDAFAKGPTL TVYKESFESQFLADTERFY TRESTEFLQQNPVTEYMKKAEARLLEEQR RVQVYLH E STQDELARKCEQV LIEKHLEIFHTEFQNL LDADKNE DLGRMYNLVSRIQDGLGELKKL

Tel: 1-631-559-9269 1-516-512-3133

Email: info@creative-biomart.com Fax: 1-631-938-8127

45-1 Ramsey Road, Shirley, NY 11967, USA



LETHIHNQGLA AIEKCGEAAALNDPKMYVQTVLVDVHKKYNALVMSAFNNDAGFVAAL
DKACGRFINNNAVTKMAQSSSKSPE LLARYCDSLKSSKNPEEAELEDTLNQVMV
VFKYIEDKDVFKFYAKMLAKRLVHQNSASDDAEASMIS KLKQACGFEYTSKLQRM
FQDIGVSKDLNEQFKKHLTNSEPLDLDFSIQVLSSGSWPFQQSCTFALPSELE RSYQ
RFTAFYASRHSGRKLWLYQLSKGELVTNCFKNRYTLQASTFQMAILLQYNTEDAYT
VQQLTDSTQ IKMDILAQVLQILLKSKLLVLEDENANVDEVELKPDTLIKLYLGYKNKKL
RVNINVPMKTEQKQEQTTH KNIEEDRKLIIQAAIVRIMKMRKVLKHQQLLGEVLTQL
SSRFKPRVPVIKKCIDILIEKEYLERVDGEKD TYSYLA TRTRPLEQKLISEEDLAANDI
LDYKDDDDKV

Purity > 80% as determined by SDS-PAGE and Coomassie blue staining.

Stability Stable for 12 months from the date of receipt of the product under proper storage and handling conditions. Avoid repeated freeze-thaw cycles.

Storage Store at -80 centigrade.

Concentration >50 ug/mL as determined by microplate BCA method.

Preparation Recombinant protein was captured through anti-DDK affinity column followed by conventional chromatography steps.

Protein Families Druggable Genome

Protein Pathways Cell cycle, Oocyte meiosis, TGF-beta signaling pathway, Ubiquitin mediated proteolysis, Wnt signaling pathway

Full Length Full L.

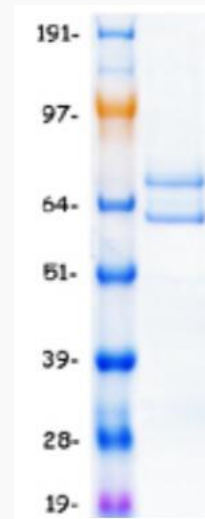
GENE INFORMATION

Tel: 1-631-559-9269 1-516-512-3133

Email: info@creative-biomart.com Fax: 1-631-938-8127

45-1 Ramsey Road, Shirley, NY 11967, USA

Gene Name	CUL1 cullin 1 [Homo sapiens (human)]
Official Symbol	CUL1
Synonyms	MGC149834; MGC149835
Gene ID	8454
mRNA Refseq	NM_003592.3
Protein Refseq	NP_003583.2
MIM	603134
UniProt ID	Q13616



Coomassie blue staining of purified CUL1 protein.

 Tel: 1-631-559-9269 1-516-512-3133

 Email: info@creative-biomart.com  Fax: 1-631-938-8127

 45-1 Ramsey Road, Shirley, NY 11967, USA