

## Recombinant Human CUL1 protein, His-tagged

Cat. No. CUL1-2239H Lot. No. (See product label)

### SPECIFICATION

<b>Product Overview</b>	Recombinant Human CUL1 protein(363-533 aa), fused with N-terminal His tag, was expressed in E. coli.
<b>Species</b>	Human
<b>Source</b>	E.coli
<b>ProteinLength</b>	363-533 aa
<b>Tag</b>	N-His
<b>Form</b>	The purified protein was Lyophilized from sterile PBS (58mM Na <sub>2</sub> HPO <sub>4</sub> , 17mM NaH <sub>2</sub> PO <sub>4</sub> , 68mM NaCl, pH7.4). 5 % trehalose and 5 % mannitol are added as protectant before lyophilization.
<b>Purity</b>	90%, by SDS-PAGE with Coomassie Brilliant Blue staining.
<b>Storage</b>	Samples are stable for up to twelve months from date of receipt at -20°C to -80°C. Store it under sterile conditions at -20°C to -80°C. It is recommended that the protein be aliquoted for optimal storage. Avoid repeated freeze-thaw cycles.
<b>Reconstitution</b>	Reconstitute at 0.25 µg/µl in 200 µl sterile water for short-term storage. After reconstitution with sterile water, if glycerol has no effect on subsequent experiments, it is recommended to add an equal volume of glycerol for long-term storage.

 Tel: 1-631-559-9269 1-516-512-3133

 Email: [info@creative-biomart.com](mailto:info@creative-biomart.com)  Fax: 1-631-938-8127

 45-1 Ramsey Road, Shirley, NY 11967, USA

**AA Sequence**

PKMYVQTVLVDVHKKYNALVMSAFNNDAGFVAALDKACGRFINNNAVTKMAQSSSKS  
PELLARYCDSLLKKSSKNPEEAELEDTLNQVMVVFKEYIEDKDVFQKFYAKMLAKRLV  
HQNSASDDAEASMISLKLKQACGFEYTSKLQRMFQDIGVSKDLNEQFKKHLTNSEPL  
DL

**GENE INFORMATION**

<b>Gene Name</b>	CUL1 cullin 1 [ Homo sapiens ]
<b>Official Symbol</b>	CUL1
<b>Synonyms</b>	CUL1; cullin 1; cullin-1; CUL-1; MGC149834; MGC149835;
<b>Gene ID</b>	8454
<b>mRNA Refseq</b>	NM_003592
<b>Protein Refseq</b>	NP_003583
<b>MIM</b>	603134
<b>UniProt ID</b>	Q13616

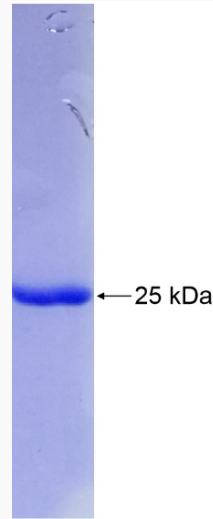
 Tel: 1-631-559-9269 1-516-512-3133

 Email: [info@creative-biomart.com](mailto:info@creative-biomart.com)  Fax: 1-631-938-8127

 45-1 Ramsey Road, Shirley, NY 11967, USA



SDS-PAGE



☎ Tel: 1-631-559-9269 1-516-512-3133

☎ Email: [info@creative-biomart.com](mailto:info@creative-biomart.com) ☎ Fax: 1-631-938-8127

☎ 45-1 Ramsey Road, Shirley, NY 11967, USA