

Recombinant Full Length Human CUL4A Protein, C-Flag-tagged

Cat. No. CUL4A-1687HFL **Lot. No.** (See product label)

SPECIFICATION

Product Overview	Recombinant Full Length Human CUL4A Protein, fused to Flag-tag at C-terminus, was expressed in Mammalian cells.
Species	Human
Source	Mammalian Cells
Description	CUL4A is the ubiquitin ligase component of a multimeric complex involved in the degradation of DNA damage-response proteins.
Form	25 mM Tris HCl, pH 7.3, 100 mM glycine, 10% glycerol.
Molecular Mass	76.6 kDa
AA Sequence	<p>MADEAPRKGSFSALVGRNGLTKPAALAAAPAKPGGAGGSKKLVIKNFRDRPRLPD NYTQDTWRKLHEAV RAVQSSTSIRYNLEELYQAVENLCSHKVSPMLYKQLRQACE DHVQAQILPFREDSLDSVLFLKKINTCWQ DHCRQMIMIRSIFLFLDRTYVLQNSTLPSI WDMGLELFRTHIISDKMVQSKTIDGILLIERERSGEAVD RLLRSLGMLSDLQVYK DSFELKFLEETNCLYAAEGQRLMQEREVPEYLNHVSKRLEEEGDRVITYLDH STQK PLIACVEKQLLGEHLTAILQKGLDHLLDENRVPDLAQMYQLFSRVRGGQQALLQHW SEYIKTFGTA IVINPEKDKDMVQDLLDFKDKVDHVIEVCFQKNERFVNLMKESFETFI NKRPNKPAELIAKHVDSKLRAG NKEATDEELERTLDKIMILFRFIHGKDVFEAFYKGD LAKRLLVGKSASVDAEKSMLSKLKHECGAFTSK LEGMFKDMELSKDIMVHFKQHM QNQSDSGPIDLTVNILTMGYWPTYTPMEVHLTPEMIKLQEVFKAFYLG KHSGRKLQ</p>

 Tel: 1-631-559-9269 1-516-512-3133

 Email: info@creative-biomart.com  Fax: 1-631-938-8127

 45-1 Ramsey Road, Shirley, NY 11967, USA

WQTTLGHAVLKAEFKEGKKEFQVSLFQTLVLLMFNEGDGFSFEEIKMATGIEDSELR
 RTLQS LACGKARVLIKSPKGKEVEDGDKFIFNGEFKHKLFRIKINQIQMKETVEEQVS
 TTERVFQDRQYQIDAAI
 VRIMKMRKTLGHNLLVSELYNQLKFPVKPGDLKKRIESLIDRDYMERDKDNPQYHY
 VATRTRPLEQKLISEEDLAANDILDYKDDDDKV

Purity > 80% as determined by SDS-PAGE and Coomassie blue staining.

Stability Stable for 12 months from the date of receipt of the product under proper storage and handling conditions. Avoid repeated freeze-thaw cycles.

Storage Store at -80 centigrade.

Concentration >50 ug/mL as determined by microplate BCA method.

Preparation Recombinant protein was captured through anti-DDK affinity column followed by conventional chromatography steps.

Protein Pathways Nucleotide excision repair, Ubiquitin mediated proteolysis

Full Length Full L.

GENE INFORMATION

Gene Name [CUL4A cullin 4A \[Homo sapiens \(human\) \]](#)

Official Symbol [CUL4A](#)

Synonyms cullin 4A; OTTHUMP00000018753; OTTHUMP00000018754

Gene ID [8451](#)

 Tel: 1-631-559-9269 1-516-512-3133

 Email: info@creative-biomart.com  Fax: 1-631-938-8127

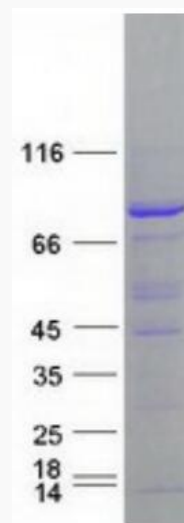
 45-1 Ramsey Road, Shirley, NY 11967, USA

mRNA Refseq [NM_003589.4](#)

Protein Refseq [NP_003580.1](#)

MIM [603137](#)

UniProt ID [Q13619](#)



Coomassie blue staining of purified CUL4A protein.

 Tel: 1-631-559-9269 1-516-512-3133

 Email: info@creative-biomart.com  Fax: 1-631-938-8127

 45-1 Ramsey Road, Shirley, NY 11967, USA