

# Recombinant Human CUL5 Protein, Myc/DDK-tagged, C13 and N15-labeled

**Cat. No.** CUL5-1475H    **Lot. No.** (See product label)

## SPECIFICATION

<b>Product Overview</b>	CUL5 MS Standard C13 and N15-labeled recombinant protein (NP_003469) with a C-terminal MYC/DDK tag, was expressed in HEK293 cells.
<b>Species</b>	Human
<b>Source</b>	HEK293
<b>Description</b>	Core component of multiple SCF-like ECS (Elongin-Cullin 2/5-SOCS-box protein) E3 ubiquitin-protein ligase complexes, which mediate the ubiquitination and subsequent proteasomal degradation of target proteins. As a scaffold protein may contribute to catalysis through positioning of the substrate and the ubiquitin-conjugating enzyme. The functional specificity of the E3 ubiquitin-protein ligase complex depends on the variable substrate recognition component. ECS(SOCS1) seems to direct ubiquitination of JAK2. Seems to be involved in proteasomal degradation of p53/TP53 stimulated by adenovirus E1B-55 kDa protein. May form a cell surface vasopressin receptor.
<b>Molecular Mass</b>	91 kDa
<b>AA Sequence</b>	MATSNLLKNKGS LQFEDK WDFMRPIVLKLLRQESVTKQQWFDLFS DVHAVCLWDD KGP AKIHQALKEDILEFIKQAQARVLSHQDDTALLKAYIVEWRKFFTQCDILPKPFCQL EITLMGKQGSNKSNVEDSIVRKLMLDTWNESIFSNIKNRLQDSAMKLVHAERLGEA FDSQLVIGVRESYVNLCSNPEDKLIYRDNFEKAYLDSTERFYRTQAPSYLQQNGVQ

 Tel: 1-631-559-9269    1-516-512-3133

 Email: [info@creative-biomart.com](mailto:info@creative-biomart.com)     Fax: 1-631-938-8127

 45-1 Ramsey Road, Shirley, NY 11967, USA

NYMKYADAKLKEEEKRALRYLETRECNSVEALMECCVNALVTSFKETILAECQGM  
 KRNETEKLHLMFSLMDKVPNGIEPMLKDLEEHIISAGLADMVAAAETITTDSEKYVEQ  
 LLTLFNRFSLVKEAFQDDPRFLTARDKAYKAVVNDATIFKLELPLKQKGVGLKTQPE  
 SKCEPELLANYCDMLLRKTPLSKKLTSEEIEAKLKEVLLVLKYVQNKDVFMRYPYHKAHLT  
 RRLILDISADSEIEENMVEWLREVGMPADYVVKLARMFQDIKVEDLNQAFKEMHKN  
 NKLALPADSVNIKILNAGAWSRSSEKVFVSLPTELEDLIPEVEEFYKKNHSGRKLHWH  
 HLMSNGIITFKNEVGQYDLEVTTFLAVLFAWNQRPREKISFENLKLATELPAELRR  
 TLWVSLVAFPKLRQVLLYEPQVNSPKDFTEGTLFSVNQEFSLIKNAKVQKRGKINLIG  
 RLQLTTERMREEENEGIVQLRILRTQEAIQIMKMRKKISNAQLQTELVEILKNMFLPQ  
 KMKIIEQIEWLIHKEYIRRDESDINTFIYMATRTRPLEQKLISEEDLAANDILDYKDDDD  
 KV

**Purity** > 80% as determined by SDS-PAGE and Coomassie blue staining

**Stability** Stable for 3 months from receipt of products under proper storage and handling conditions.

**Storage** Store at -80 centigrade. Avoid repeated freeze-thaw cycles.

**Concentration** 50 µg/mL as determined by BCA

**Storage Buffer** 100 mM glycine, 25 mM Tris-HCl, pH 7.3.

## GENE INFORMATION

**Gene Name** CUL5 cullin 5 [ Homo sapiens (human) ]

**Official Symbol** CUL5

**Synonyms** CUL5; cullin 5; cullin-5; VACM 1; CUL-5; Vasopressin-activated calcium-mobilizing receptor-1; vasopressin-activated calcium-mobilizing receptor 1; Cullin-5

 Tel: 1-631-559-9269 1-516-512-3133

 Email: [info@creative-biomart.com](mailto:info@creative-biomart.com)  Fax: 1-631-938-8127

 45-1 Ramsey Road, Shirley, NY 11967, USA

(vasopressin-activated calcium-mobilizing receptor-1); VACM1; VACM-1;

**Gene ID** 8065

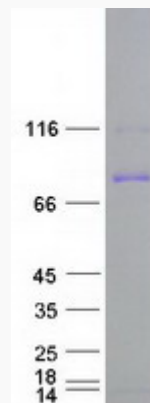
**mRNA Refseq** NM\_003478


**Protein Refseq** NP\_003469

**MIM** 601741

**UniProt ID** Q93034

**SDS-PAGE**



 Tel: 1-631-559-9269 1-516-512-3133

 Email: [info@creative-biomart.com](mailto:info@creative-biomart.com)  Fax: 1-631-938-8127

 45-1 Ramsey Road, Shirley, NY 11967, USA