

## Recombinant Human CUL5 Protein, GST-tagged

**Cat. No.** CUL5-2136H    **Lot. No.** (See product label)

### SPECIFICATION

<b>Product Overview</b>	Human CUL5 partial ORF ( AAH63306, 1 a.a. - 100 a.a.) recombinant protein with GST-tag at N-terminal.
<b>Species</b>	Human
<b>Source</b>	Wheat Germ
<b>Description</b>	CUL5 (Cullin 5) is a Protein Coding gene. Diseases associated with CUL5 include Alzheimer Disease 16 and Alzheimer Disease 12. Among its related pathways are Innate Immune System and Class I MHC mediated antigen processing and presentation. GO annotations related to this gene include protein heterodimerization activity and ubiquitin protein ligase binding. An important paralog of this gene is CUL1.
<b>Molecular Mass</b>	36.63 kDa
<b>AA Sequence</b>	MATSNLLKNKGSLQFEDKWDFMRPIVLKLLRQESVTKQQWFDFLSDVHAVCLWDD KGPAAIHQALKEDILEFIKQAQARVLSHQDDTALLKAYIVEWRKF
<b>Applications</b>	Enzyme-linked Immunoabsorbent Assay Western Blot (Recombinant protein) Antibody Production Protein Array
<b>Notes</b>	Best use within three months from the date of receipt of this protein.

 Tel: 1-631-559-9269    1-516-512-3133

 Email: [info@creative-biomart.com](mailto:info@creative-biomart.com)     Fax: 1-631-938-8127

 45-1 Ramsey Road, Shirley, NY 11967, USA

**Storage** Store at -80 centigrade. Aliquot to avoid repeated freezing and thawing.

**Storage Buffer** 50 mM Tris-HCl, 10 mM reduced Glutathione, pH=8.0 in the elution buffer.

## GENE INFORMATION

**Gene Name** CUL5 cullin 5 [ Homo sapiens ]

**Official Symbol** CUL5

**Synonyms** CUL5; cullin 5; cullin-5; VACM 1; CUL-5; Vasopressin-activated calcium-mobilizing receptor-1; vasopressin-activated calcium-mobilizing receptor 1; Cullin-5 (vasopressin-activated calcium-mobilizing receptor-1); VACM1; VACM-1;

**Gene ID** 8065

**mRNA Refseq** NM\_003478

**Protein Refseq** NP\_003469

**MIM** 601741

**UniProt ID** Q93034

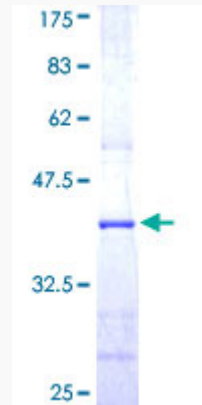
 Tel: 1-631-559-9269 1-516-512-3133

 Email: [info@creative-biomart.com](mailto:info@creative-biomart.com)  Fax: 1-631-938-8127

 45-1 Ramsey Road, Shirley, NY 11967, USA

**Quality Control**

**Testing:**



12.5% SDS-PAGE Stained with Coomassie Blue.

 Tel: 1-631-559-9269 1-516-512-3133

 Email: [info@creative-biomart.com](mailto:info@creative-biomart.com)  Fax: 1-631-938-8127

 45-1 Ramsey Road, Shirley, NY 11967, USA