

Recombinant Human CUTA Protein, Myc/DDK-tagged, C13 and N15-labeled

Cat. No. CUTA-4849H **Lot. No.** (See product label)

SPECIFICATION

Product Overview	CUTA MS Standard C13 and N15-labeled recombinant protein (NP_001014837) with a C-terminal MYC/DDK tag, was expressed in HEK293 cells.
Species	Human
Source	HEK293
Description	May form part of a complex of membrane proteins attached to acetylcholinesterase (AChE).
Molecular Mass	16.8 kDa
AA Sequence	MPALLPVASRLLLLPRVLLTMASGSPPTQPSPASDSGSGYVPGSVSAAFVTCNEK VAKEIARAVVEKRLAACVNLIPQITSIYEWKKGIEEDSEVLMMIKTQSSLVPALTD FVR SVHPYEVAEVI ALPVEQGNFPYLQWVRQVTE SVSDSITVLPTRTRPLEQKLISEEDLA ANDILDYKDDDDKV
Purity	> 80% as determined by SDS-PAGE and Coomassie blue staining
Stability	Stable for 3 months from receipt of products under proper storage and handling conditions.
Storage	Store at -80 centigrade. Avoid repeated freeze-thaw cycles.

 Tel: 1-631-559-9269 1-516-512-3133

 Email: info@creative-biomart.com  Fax: 1-631-938-8127

 45-1 Ramsey Road, Shirley, NY 11967, USA

Concentration 50 µg/mL as determined by BCA

Storage Buffer 100 mM glycine, 25 mM Tris-HCl, pH 7.3.

GENE INFORMATION

Gene Name [CUTA cutA divalent cation tolerance homolog \[Homo sapiens \(human\) \]](#)

Official Symbol [CUTA](#)

Synonyms CUTA; cutA divalent cation tolerance homolog (E. coli); acetylcholinesterase associated protein, ACHAP, C6orf82, chromosome 6 open reading frame 82; protein CutA; divalent cation tolerant protein CUTA; acetylcholinesterase-associated protein; brain acetylcholinesterase putative membrane anchor; ACHAP; C6orf82; MGC111154;

Gene ID [51596](#)

mRNA Refseq [NM_001014837](#)

Protein Refseq [NP_001014837](#)

MIM [616953](#)

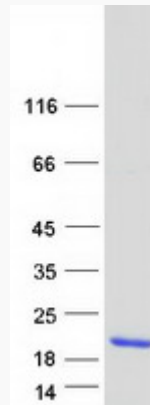
UniProt ID [O60888](#)

 Tel: 1-631-559-9269 1-516-512-3133

 Email: info@creative-biomart.com  Fax: 1-631-938-8127

 45-1 Ramsey Road, Shirley, NY 11967, USA

SDS-PAGE



 Tel: 1-631-559-9269 1-516-512-3133

 Email: info@creative-biomart.com  Fax: 1-631-938-8127

 45-1 Ramsey Road, Shirley, NY 11967, USA