

# Recombinant Human CUTA Protein, Myc/DDK-tagged, C13 and N15-labeled

**Cat. No.** CUTA-5791H    **Lot. No.** (See product label)

## SPECIFICATION

<b>Product Overview</b>	CUTA MS Standard C13 and N15-labeled recombinant protein (NP_057005) with a C-terminal MYC/DDK tag, was expressed in HEK293 cells.
<b>Species</b>	Human
<b>Source</b>	HEK293
<b>Description</b>	May form part of a complex of membrane proteins attached to acetylcholinesterase (AChE).
<b>Molecular Mass</b>	16.7 kDa
<b>AA Sequence</b>	MPALLPVASRLLLLPRVLLTMASGSPPTQPSPASDSGSGYVPGSVSAAFVTCPNEK VAKEIARAVVEKRLAACVNLIPQITSIYEWKKGIEEDSEVLMMIKTQSSLVPALTD FVR SVHPYEVAEVI ALPVEQGNFPYLQWVHQVTEVS SDSITVLPTRTRPLEQKLISEEDLA ANDILDYKDDDDKV
<b>Purity</b>	> 80% as determined by SDS-PAGE and Coomassie blue staining
<b>Stability</b>	Stable for 3 months from receipt of products under proper storage and handling conditions.
<b>Storage</b>	Store at -80 centigrade. Avoid repeated freeze-thaw cycles.

 Tel: 1-631-559-9269    1-516-512-3133

 Email: [info@creative-biomart.com](mailto:info@creative-biomart.com)     Fax: 1-631-938-8127

 45-1 Ramsey Road, Shirley, NY 11967, USA

**Concentration** 50 µg/mL as determined by BCA

**Storage Buffer** 100 mM glycine, 25 mM Tris-HCl, pH 7.3.

## GENE INFORMATION

**Gene Name** CUTA cutA divalent cation tolerance homolog [ Homo sapiens (human) ]

**Official Symbol** CUTA

**Synonyms** CUTA; cutA divalent cation tolerance homolog (E. coli); acetylcholinesterase associated protein, ACHAP, C6orf82, chromosome 6 open reading frame 82; protein CutA; divalent cation tolerant protein CUTA; acetylcholinesterase-associated protein; brain acetylcholinesterase putative membrane anchor; ACHAP; C6orf82; MGC111154;

**Gene ID** 51596

**mRNA Refseq** NM\_015921

**Protein Refseq** NP\_057005

**MIM** 616953

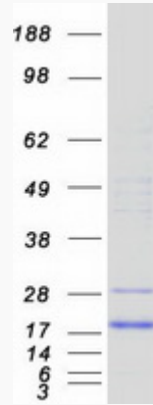
**UniProt ID** O60888

 Tel: 1-631-559-9269 1-516-512-3133

 Email: [info@creative-biomart.com](mailto:info@creative-biomart.com)  Fax: 1-631-938-8127

 45-1 Ramsey Road, Shirley, NY 11967, USA

SDS-PAGE



 Tel: 1-631-559-9269 1-516-512-3133

 Email: [info@creative-biomart.com](mailto:info@creative-biomart.com)  Fax: 1-631-938-8127

 45-1 Ramsey Road, Shirley, NY 11967, USA