

Recombinant Human CUTA Protein (Met1-Pro156), C-His tagged

Cat. No. CUTA-5905H Lot. No. (See product label)

SPECIFICATION

Product Overview	Recombinant human CUTA (Met1-Pro156) fused with the C-terminal His tag was expressed in E. coli.
Species	Human
Source	E.coli
ProteinLength	Met1-Pro156
Form	Lyophilized powder/frozen liquid
Molecular Mass	17.16 kDa
Purity	> 90 % as determined by SDS-PAGE
Notes	For research use only.
Storage	Use a manual defrost freezer and avoid repeated freeze thaw cycles. Store at 2 to 8 centigrade for one week. Store at -20 to -80 centigrade for twelve months from the date of receipt.
Storage Buffer	Supplied as solution form in PBS or lyophilized from PBS.
Reconstitution	Reconstitute in sterile water for a stock solution.

 Tel: 1-631-559-9269 1-516-512-3133

 Email: info@creative-biomart.com  Fax: 1-631-938-8127

 45-1 Ramsey Road, Shirley, NY 11967, USA

Shipping They are shipped out with dry ice/blue ice unless customers require otherwise.

GENE INFORMATION

Gene Name CUTA cutA divalent cation tolerance homolog (E. coli) [Homo sapiens (human)]

Official Symbol CUTA

Synonyms CUTA; cutA divalent cation tolerance homolog (E. coli); acetylcholinesterase associated protein, ACHAP, C6orf82, chromosome 6 open reading frame 82; protein CutA; divalent cation tolerant protein CUTA; acetylcholinesterase-associated protein; brain acetylcholinesterase putative membrane anchor; ACHAP; C6orf82; MGC111154;

Gene ID 51596

mRNA Refseq NM_001014433

Protein Refseq NP_001014433

MIM 616953

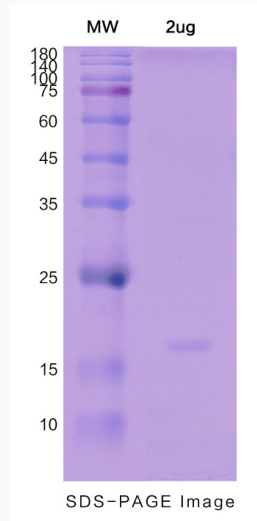
UniProt ID O60888

 Tel: 1-631-559-9269 1-516-512-3133

 Email: info@creative-biomart.com  Fax: 1-631-938-8127

 45-1 Ramsey Road, Shirley, NY 11967, USA

SDS-PAGE



 Tel: 1-631-559-9269 1-516-512-3133

 Email: info@creative-biomart.com  Fax: 1-631-938-8127

 45-1 Ramsey Road, Shirley, NY 11967, USA