

Recombinant Human CUZD1 protein, His-tagged

Cat. No. CUZD1-1551H Lot. No. (See product label)

SPECIFICATION

Product Overview	Recombinant Human CUZD1 aa. (Pro218~Arg479) fused with N-terminal His tag was produced in E. coli cells.
Species	Human
Source	E.coli
ProteinLength	Pro218~Arg479
Form	Freeze-dried powder
Molecular Mass	59kDa as determined by SDS-PAGE reducing conditions.
Endotoxin	<1.0EU per 1ug (determined by the LAL method)
Purity	>98%
Applications	Positive Control; Immunogen; SDS-PAGE; WB.
Stability	The thermal stability is described by the loss rate. The loss rate was determined by accelerated thermal degradation test, that is, incubate the protein at 37°C for 48h, and no obvious degradation and precipitation were observed. The loss rate is less than 5% within the expiration date under appropriate storage condition.
Storage	Avoid repeated freeze/thaw cycles. Store at 2-8°C for one month. Aliquot and store at

 Tel: 1-631-559-9269 1-516-512-3133

 Email: info@creative-biomart.com  Fax: 1-631-938-8127

 45-1 Ramsey Road, Shirley, NY 11967, USA

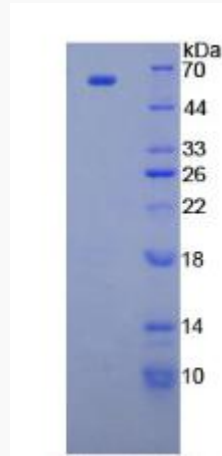
	-80°C for 12 months.
Concentration	200µg/mL
Storage buffer	20mM Tris, 150mM NaCl, pH8.0, containing 1mM EDTA, 1mM DTT, 0.01% sarcosyl, 5%Trehalose and Proclin300.
Reconstitution	Reconstitute in 20mM Tris, 150mM NaCl (pH8.0) to a concentration of 0.1-1.0 mg/mL. Do not vortex.
Isoelectric Point	6
GENE INFORMATION	
Gene Name	CUZD1 CUB and zona pellucida like domains 1 [Homo sapiens (human)]
Official Symbol	CUZD1
Synonyms	CUZD1; CUB and zona pellucida like domains 1; ERG1; ERG-1; UO-44; ITMAP1; CUB and zona pellucida-like domain-containing protein 1; CUB and ZP domain-containing protein 1; estrogen regulated gene 1; transmembrane protein UO-44
Gene ID	50624
mRNA Refseq	NM_022034.5
Protein Refseq	NP_071317.2
UniProt ID	Q86UP6

 Tel: 1-631-559-9269 1-516-512-3133

 Email: info@creative-biomart.com  Fax: 1-631-938-8127

 45-1 Ramsey Road, Shirley, NY 11967, USA

SDS-PAGE



 Tel: 1-631-559-9269 1-516-512-3133

 Email: info@creative-biomart.com  Fax: 1-631-938-8127

 45-1 Ramsey Road, Shirley, NY 11967, USA