

## Recombinant Human CUZD1 Protein, GST-tagged

Cat. No. CUZD1-2142H Lot. No. (See product label)

### SPECIFICATION

<b>Product Overview</b>	Human CUZD1 partial ORF ( NP_071317, 471 a.a. - 570 a.a.) recombinant protein with GST-tag at N-terminal.
<b>Species</b>	Human
<b>Source</b>	Wheat Germ
<b>Description</b>	CUZD1 (CUB And Zona Pellucida Like Domains 1) is a Protein Coding gene. An important paralog of this gene is GP2.
<b>Molecular Mass</b>	36.74 kDa
<b>AA Sequence</b>	YPLFGHYGRFQFNFAKFLRSMSSVYLQCKVLICDSSDHQSRCNQGCVSRSKRDISS YKWKTDSSIIGPIRLKRDRSASGNSGFQHETHAEETPNQPFNSVH
<b>Applications</b>	Enzyme-linked Immunoabsorbent Assay Western Blot (Recombinant protein) Antibody Production Protein Array
<b>Notes</b>	Best use within three months from the date of receipt of this protein.
<b>Storage</b>	Store at -80 centigrade. Aliquot to avoid repeated freezing and thawing.
<b>Storage Buffer</b>	50 mM Tris-HCl, 10 mM reduced Glutathione, pH=8.0 in the elution buffer.

 Tel: 1-631-559-9269 1-516-512-3133

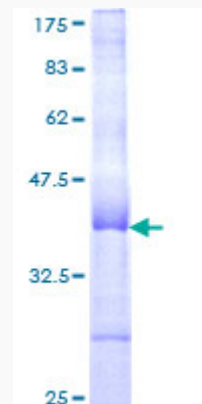
 Email: [info@creative-biomart.com](mailto:info@creative-biomart.com)  Fax: 1-631-938-8127

 45-1 Ramsey Road, Shirley, NY 11967, USA

## GENE INFORMATION

<b>Gene Name</b>	CUZD1 CUB and zona pellucida-like domains 1 [ Homo sapiens ]
<b>Official Symbol</b>	CUZD1
<b>Synonyms</b>	ERG-1; UO-44
<b>Gene ID</b>	50624
<b>mRNA Refseq</b>	NM_022034.5
<b>Protein Refseq</b>	NP_071317.2
<b>MIM</b>	616644
<b>UniProt ID</b>	Q86UP6

**Quality Control  
Testing:**



12.5% SDS-PAGE Stained with Coomassie Blue.

 Tel: 1-631-559-9269 1-516-512-3133

 Email: [info@creative-biomart.com](mailto:info@creative-biomart.com)  Fax: 1-631-938-8127

 45-1 Ramsey Road, Shirley, NY 11967, USA