

Recombinant Human CWC15 Protein, Myc/DDK-tagged, C13 and N15-labeled

Cat. No. CWC15-1351H **Lot. No.** (See product label)

SPECIFICATION

Product Overview	CWC15 MS Standard C13 and N15-labeled recombinant protein (NP_057487) with a C-terminal MYC/DDK tag, was expressed in HEK293 cells.
Species	Human
Source	HEK293
Description	CWC15 (CWC15 Spliceosome Associated Protein Homolog) is a Protein Coding gene. Diseases associated with CWC15 include Dehydrated Hereditary Stomatocytosis 1 With Or Without Pseudohyperkalemia And/Or Perinatal Edema and Cutaneous Diphtheria. Among its related pathways are Gene Expression and mRNA Splicing - Major Pathway. Gene Ontology (GO) annotations related to this gene include RNA binding.
Molecular Mass	26.6 kDa
AA Sequence	MTTAARPTFEPARGGRGKGGDLSQLSKQYSSRDLPSTKIKYRQTTQDAPEEVRN RDFRRELEERERAAAREKNRDRPTREHTTSSSVSKKPRLDQIPAAANLDADDPLTDE EDEDFFEEESDDDDTAALLAELEKIKKERAEQARKEQEQAEEERIRMENILSGNPLL NLTGPSQPQANFKVKRRWDDVVFKNCAKGVDDQKKDKRFVNDTLRSEFHKKFME KYIKTRTRPLEQKLISEEDLAANDILDYKDDDDKV
Purity	> 80% as determined by SDS-PAGE and Coomassie blue staining

 Tel: 1-631-559-9269 1-516-512-3133

 Email: info@creative-biomart.com  Fax: 1-631-938-8127

 45-1 Ramsey Road, Shirley, NY 11967, USA

Stability	Stable for 3 months from receipt of products under proper storage and handling conditions.
Storage	Store at -80 centigrade. Avoid repeated freeze-thaw cycles.
Concentration	50 µg/mL as determined by BCA
Storage Buffer	100 mM glycine, 25 mM Tris-HCl, pH 7.3.

GENE INFORMATION

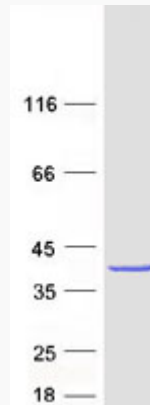
Gene Name	CWC15 CWC15 spliceosome associated protein homolog [Homo sapiens (human)]
Official Symbol	CWC15
Synonyms	CWC15; CWC15 spliceosome associated protein homolog; ORF5; AD002; Cwf15; C11orf5; HSPC148; spliceosome-associated protein CWC15 homolog; CWC15 spliceosome-associated protein
Gene ID	51503
mRNA Refseq	NM_016403
Protein Refseq	NP_057487
UniProt ID	Q9P013

 Tel: 1-631-559-9269 1-516-512-3133

 Email: info@creative-biomart.com  Fax: 1-631-938-8127

 45-1 Ramsey Road, Shirley, NY 11967, USA

SDS-PAGE



 Tel: 1-631-559-9269 1-516-512-3133

 Email: info@creative-biomart.com  Fax: 1-631-938-8127

 45-1 Ramsey Road, Shirley, NY 11967, USA