

Recombinant Human CX3CL1 protein, His & T7-tagged

Cat. No. CX3CL1-766H Lot. No. (See product label)

SPECIFICATION

Product Overview	Recombinant Human CX3CL1 aa. (Gln25~Pro332 (Accession # P78423)) fused with N-terminal His & T7 tag was produced in E. coli cells.
Species	Human
Source	E.coli
ProteinLength	Gln25~Pro332
Form	Freeze-dried powder
Molecular Mass	Predicted Molecular Mass: 36.4kDa
Endotoxin	<1.0EU per 1g (determined by the LAL method)
Purity	> 95%
Characteristic	The isoelectric point is 6.1.
Applications	SDS-PAGE; WB; ELISA; IP
Stability	The thermal stability is described by the loss rate. The loss rate was determined by accelerated thermal degradation test, that is, incubate the protein at 37°C for 48h, and no obvious degradation and precipitation were observed. The loss rate is less than 5% within the expiration date under appropriate storage condition.

 Tel: 1-631-559-9269 1-516-512-3133

 Email: info@creative-biomart.com  Fax: 1-631-938-8127

 45-1 Ramsey Road, Shirley, NY 11967, USA

Storage	Avoid repeated freeze/thaw cycles. Store at 2-8°C for one month. Aliquot and store at -80°C for 12 months.
Storage buffer	Supplied as lyophilized form in PBS, pH7.4, containing 5% trehalose, 0.01% sarcosyl
Reconstitution	Reconstitute in sterile PBS, pH7.2-pH7.4

GENE INFORMATION

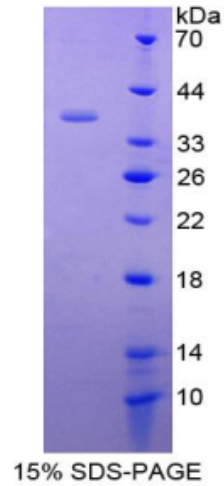
Gene Name	CX3CL1 C-X3-C motif chemokine ligand 1 [Homo sapiens (human)]
Official Symbol	CX3CL1
Synonyms	CX3CL1; C-X3-C motif chemokine ligand 1; NTN; NTT; CXC3; CXC3C; SCYD1; ABCD-3; C3Xkine; fractalkine; neurotactin; fractalkine; C-X3-C motif chemokine 1; CX3C membrane-anchored chemokine; chemokine (C-X3-C motif) ligand 1; small inducible cytokine subfamily D (Cys-X3-Cys), member 1 (fractalkine, neurotactin); small inducible cytokine subfamily D (Cys-X3-Cys), member-1; small-inducible cytokine D1
Gene ID	6376
mRNA Refseq	NM_001304392.1
Protein Refseq	NP_001291321.1
UniProt ID	P78423

 Tel: 1-631-559-9269 1-516-512-3133

 Email: info@creative-biomart.com  Fax: 1-631-938-8127

 45-1 Ramsey Road, Shirley, NY 11967, USA

SDS-PAGE



 Tel: 1-631-559-9269 1-516-512-3133

 Email: info@creative-biomart.com  Fax: 1-631-938-8127

 45-1 Ramsey Road, Shirley, NY 11967, USA