

Recombinant Human CX3CR1 Protein, GST-tagged

Cat. No. CX3CR1-2150H **Lot. No.** (See product label)

SPECIFICATION

Product Overview	Human CX3CR1 full-length ORF (AAH28078.1, 1 a.a. - 355 a.a.) recombinant protein with GST-tag at N-terminal.
Species	Human
Source	Wheat Germ
Description	Fractalkine is a transmembrane protein and chemokine involved in the adhesion and migration of leukocytes. The protein encoded by this gene is a receptor for fractalkine. The encoded protein also is a coreceptor for HIV-1, and some variations in this gene lead to increased susceptibility to HIV-1 infection and rapid progression to AIDS. Four transcript variants encoding two different isoforms have been found for this gene. [provided by RefSeq, Jan 2010]
Molecular Mass	64.79 kDa
AA Sequence	MDQFPESVTENFEYDDLAEACYIGDIVVFGTVFLSIFYSVIFAIGLVGNLLVVFALTNSK KPKSVTDIYLLNLALS DLLFVATLPFWTHYLINEKGLHNAMCKFTTAFFFIGFFGSIFFI TVISIDRYLAIVLAANSMNNRTVQHGVTISLGVWAAAILVAAPQFMFTKQKENECLGD YPEVLQEIWPVLRNVETNFLGFLPLLIMSYCYFRIIQLFSCKNHKKAKAIKLILLVVIV FFLFWTPYNMIFLETCLKLYDFFPSCDMRKDLRLALSVTETVAFSHCCLNPLIYAFAG EKFRRYLYHLYGKCLAVLCGRSVHVD FSSSESQRSRHGSVLSSNFTYHTSDGDALL LL
Applications	Enzyme-linked Immunoabsorbent Assay

 Tel: 1-631-559-9269 1-516-512-3133

 Email: info@creative-biomart.com  Fax: 1-631-938-8127

 45-1 Ramsey Road, Shirley, NY 11967, USA

Western Blot (Recombinant protein)
 Antibody Production
 Protein Array

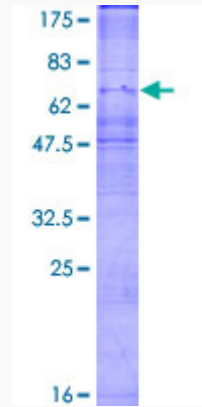
Notes	Best use within three months from the date of receipt of this protein.
Storage	Store at -80 centigrade. Aliquot to avoid repeated freezing and thawing.
Storage Buffer	50 mM Tris-HCl, 10 mM reduced Glutathione, pH=8.0 in the elution buffer.

GENE INFORMATION

Gene Name	CX3CR1 chemokine (C-X3-C motif) receptor 1 [Homo sapiens]
Official Symbol	CX3CR1
Synonyms	CX3CR1; chemokine (C-X3-C motif) receptor 1; chemokine (C X3 C) receptor 1 , CMKBRL1, GPR13; CX3C chemokine receptor 1; CCRL1; CMKDR1; V28; CMK-BRL1; CMK-BRL-1; C-X3-C CKR-1; fractalkine receptor; G protein-coupled receptor 13; G-protein coupled receptor 13; chemokine (C-X3-C) receptor 1; beta chemokine receptor-like 1; chemokine (C-C) receptor-like 1; GPR13; GPRV28; CMKBRL1;
Gene ID	1524
mRNA Refseq	NM_001171171
Protein Refseq	NP_001164642
MIM	601470
UniProt ID	P49238

Quality Control

Testing:



12.5% SDS-PAGE Stained with Coomassie Blue.

 Tel: 1-631-559-9269 1-516-512-3133

 Email: info@creative-biomart.com  Fax: 1-631-938-8127

 45-1 Ramsey Road, Shirley, NY 11967, USA