

Recombinant Human CX3CR1 Protein, His/GST-tagged

Cat. No. CX3CR1-220H Lot. No. (See product label)

SPECIFICATION

Product Overview	Recombinant Human CX3CR1 Protein(NP_001164642.1)(Met1~Lys103), fused with N-terminal His and GST tag, was expressed in E. coli.
Species	Human
Source	E.coli
ProteinLength	Met1~Lys103
Description	Fractalkine is a transmembrane protein and chemokine involved in the adhesion and migration of leukocytes. The protein encoded by this gene is a receptor for fractalkine. The encoded protein also is a coreceptor for HIV-1, and some variations in this gene lead to increased susceptibility to HIV-1 infection and rapid progression to AIDS. Four transcript variants encoding two different isoforms have been found for this gene.
Form	20mM Tris, 150mM NaCl, pH8.0, containing 0.01% SKL, 5% Trehalose.
Molecular Mass	42kDa as determined by SDS-PAGE reducing conditions.
AA Sequence	MDQFPESVTENFEYDDLAEACYIGDIVVFGTVFLSIFYSVIFAIGLVGNLLVVFALTNSK KPKSVTDIYLLNLALS DLLFVATLPFWTHYLINEKGLHNAMCK
Endotoxin	<1.0EU per 1g (determined by the LAL method)
Purity	> 90%

 Tel: 1-631-559-9269 1-516-512-3133

 Email: info@creative-biomart.com  Fax: 1-631-938-8127

 45-1 Ramsey Road, Shirley, NY 11967, USA

Applications	Positive Control; Immunogen; SDS-PAGE; WB. If bio-activity of the protein is needed, please check active protein.
Stability	The thermal stability is described by the loss rate. The loss rate was determined by accelerated thermal degradation test, that is, incubate the protein at 37°C for 48h, and no obvious degradation and precipitation were observed. The loss rate is less than 5% within the expiration date under appropriate storage condition.
Storage	Avoid repeated freeze/thaw cycles. Store at 2-8°C for one month. Aliquot and store at -80°C for 12 months.
Concentration	200g/mL
Reconstitution	Reconstitute in 20mM Tris, 150mM NaCl (pH8.0) to a concentration of 0.1-1.0 mg/mL. Do not vortex.

GENE INFORMATION

Gene Name	CX3CR1 C-X3-C motif chemokine receptor 1 [Homo sapiens (human)]
Official Symbol	CX3CR1
Synonyms	V28; CCRL1; GPR13; CMKDR1; GPRV28; CMKBRL1
Gene ID	1524
mRNA Refseq	NM_001171171.2
Protein Refseq	NP_001164642.1
MIM	601470

 Tel: 1-631-559-9269 1-516-512-3133

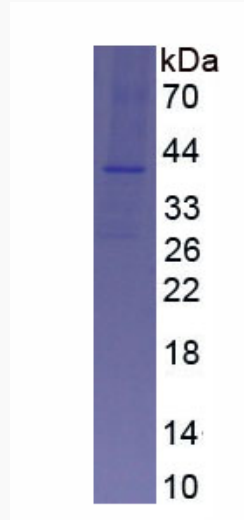
 Email: info@creative-biomart.com  Fax: 1-631-938-8127

 45-1 Ramsey Road, Shirley, NY 11967, USA

UniProt ID

P49238

SDS-PAGE of
CX3CR1-220H



 Tel: 1-631-559-9269 1-516-512-3133

 Email: info@creative-biomart.com  Fax: 1-631-938-8127

 45-1 Ramsey Road, Shirley, NY 11967, USA