

Active Recombinant Human CXADR protein, His-tagged

Cat. No. CXADR-3854H Lot. No. (See product label)

SPECIFICATION

Product Overview	Active Recombinant Human CXADR protein(NP_001329.1)(Met 1-Gly 237) was expressed in HEK293, fused with a polyhistidine tag at the C-terminus.
Species	Human
Source	HEK293
ProteinLength	1-237 aa
Form	Lyophilized from sterile PBS, pH 7.4.
Bio-activity	Measured by the ability of the immobilized protein to support the adhesion of mouse neutrophils. When 5 x 10E4 cells/well are added to CXADR coated plates (4 µg/ml and 100 µl/well), approximately 20%-40% will adhere specifically after 60 minutes at 37 °C.
Molecular Mass	The secreted recombinant human CXADR consists of 229 amino acids and has a predicted molecular mass of 25.6 kDa. As a result of glycosylation, the apparent molecular mass of rh CXADR is approximately 35 kDa in SDS-PAGE under reducing conditions.
Endotoxin	< 1.0 EU per µg of the protein as determined by the LAL method.
Purity	> 92 % as determined by SDS-PAGE

 Tel: 1-631-559-9269 1-516-512-3133

 Email: info@creative-biomart.com  Fax: 1-631-938-8127

 45-1 Ramsey Road, Shirley, NY 11967, USA

Storage Store it under sterile conditions at -20°C to -80°C upon receiving. Recommend to aliquot the protein into smaller quantities for optimal storage. Avoid repeated freeze-thaw cycles.

Reconstitution It is recommended that sterile water be added to the vial to prepare a stock solution of 0.2 ug/ul. Centrifuge the vial at 4°C before opening to recover the entire contents.

GENE INFORMATION

Gene Name CXADR coxsackie virus and adenovirus receptor [Homo sapiens]

Official Symbol CXADR

Synonyms CXADR; coxsackie virus and adenovirus receptor; coxsackievirus and adenovirus receptor; CAR; HCVADR; CVB3-binding protein; coxsackievirus B-adenovirus receptor; 46 kD coxsackievirus and adenovirus receptor (CAR) protein; HCAR; CAR4/6;

Gene ID 1525

mRNA Refseq NM_001207063

Protein Refseq NP_001193992

MIM 602621

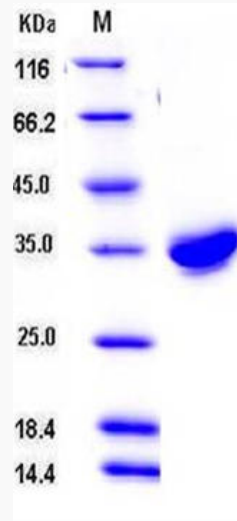
UniProt ID P78310

 Tel: 1-631-559-9269 1-516-512-3133

 Email: info@creative-biomart.com  Fax: 1-631-938-8127

 45-1 Ramsey Road, Shirley, NY 11967, USA

SDS-PAGE



 Tel: 1-631-559-9269 1-516-512-3133

 Email: info@creative-biomart.com  Fax: 1-631-938-8127

 45-1 Ramsey Road, Shirley, NY 11967, USA