

Recombinant Pan troglodytes CXCL1 Protein

Cat. No. CXCL1-01P **Lot. No.** (See product label)

SPECIFICATION

| | |
|-------------------------|---|
| Product Overview | Recombinant Pan troglodytes CXCL1 Protein was expressed in E.coli cell |
| Species | Pan troglodytes |
| Source | E.coli |
| Description | The chemokine (C-X-C motif) ligand 1 (CXCL1) is a small peptide belonging to the CXC chemokine family that acts as a chemoattractant for several immune cells, especially neutrophils or other non-hematopoietic cells to the site of injury or infection and plays an important role in regulation of immune and inflammatory responses. |
| Molecular Mass | The protein has a calculated MW of 12.12 kDa. |
| AA Sequence | MHHHHHHMAR AALSAAPSNP RLLRVALLLL LLVAAGRRAA GASVATELRC QCLQTLQGIHPKNIQSVNVK SPGPHCAQTE VIATLKNGRK ACLNPASPIV KKIIEMLNSD KSN |
| Purity | >85% by SDS-PAGE |
| Storage | Store it under sterile conditions at -20 to -80 °C. It is recommended that the protein be aliquoted for optimal storage. Avoid repeated freeze-thaw cycles. |
| Concentration | 0.2 mg/mL |
| Storage Buffer | PBS, pH 7.4 |

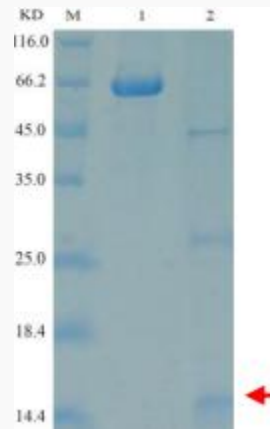
 Tel: 1-631-559-9269 1-516-512-3133

 Email: info@creative-biomart.com  Fax: 1-631-938-8127

 45-1 Ramsey Road, Shirley, NY 11967, USA

GENE INFORMATION

| | |
|------------------------|---|
| Gene Name | CXCL1 C-X-C motif chemokine ligand 1 [Pan troglodytes (chimpanzee)] |
| Official Symbol | CXCL1 |
| Gene ID | 740567 |
| mRNA Refseq | XM_001156094.6 |
| Protein Refseq | XP_001156094.1 |
| UniProt ID | H2QPN5 |

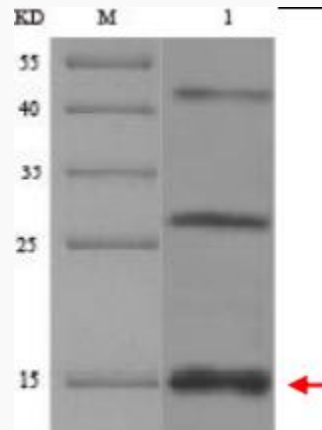


Lane 1: 0.5mg/ml BSA Lane 2: purified protein

Tel: 1-631-559-9269 1-516-512-3133

Email: info@creative-biomart.com Fax: 1-631-938-8127

45-1 Ramsey Road, Shirley, NY 11967, USA



Lane1: purified protein

 Tel: 1-631-559-9269 1-516-512-3133

 Email: info@creative-biomart.com  Fax: 1-631-938-8127

 45-1 Ramsey Road, Shirley, NY 11967, USA