

Active Recombinant Human CXCL1 Protein (Ala35-Asn107), N-His tagged, Animal-free, Carrier-free

Cat. No. CXCL1-134H Lot. No. (See product label)

SPECIFICATION

Product Overview	Recombinant Human CXCL1 Protein (Ala35-Asn107) with N-His tag was expressed in E. coli and Animal-free as well as Carrier-free.
Species	Human
Source	E.coli
ProteinLength	Ala35-Asn107
Description	C-X-C motif chemokine 1 (CXCL1) also named Growth-regulated oncogene alpha (GRO α), which is a chemokine of the intercrine alpha family. CXCL1 is a 7.9 kDa protein containing 73 amino acid residues. CXCL1 is expressed in immune cells such as macrophage and neutrophils. CXCL1 plays an important role with immune responses and cancer progression. CXCL1 activates the cell signal transduction with casepas1 that affect the cell proliferation, differentiation and migration.
Form	Lyophilized
Bio-activity	Measure by its ability to chemoattract BaF3 cells transfected with human CXCR2. The ED50 for this effect is < 3 ng/mL.
Molecular Mass	The protein has a calculated MW of 8.67 kDa. The protein migrates as 10 kDa under reducing condition (SDS-PAGE analysis).

 Tel: 1-631-559-9269 1-516-512-3133

 Email: info@creative-biomart.com  Fax: 1-631-938-8127

 45-1 Ramsey Road, Shirley, NY 11967, USA

Endotoxin	< 0.1 EU/μg of the protein by the LAL method.
Purity	>98% as determined by SDS-PAGE analysis.
Storage	This product is stable after storage at: -20 centigrade for 12 months in lyophilized state from date of receipt. -20 or -80 centigrade for 1 month under sterile conditions after reconstitution. Avoid repeated freeze/thaw cycles.
Storage Buffer	Lyophilized from a 0.2 μm filtered solution of PBS, pH 7.4.
Reconstitution	It is recommended to reconstitute the lyophilized protein in sterile H ₂ O to a concentration not less than 200 μg/mL and incubate the stock solution for at least 20 min to ensure sufficient re-dissolved.
Shipping	The product is shipped with polar packs. Upon receipt, store it immediately at -20 centigrade or lower for long term storage.

GENE INFORMATION

Gene Name	CXCL1 chemokine (C-X-C motif) ligand 1 (melanoma growth stimulating activity, alpha) [Homo sapiens (human)]
Official Symbol	CXCL1
Synonyms	CXCL1; chemokine (C-X-C motif) ligand 1 (melanoma growth stimulating activity, alpha); fibroblast secretory protein , FSP, GRO1, GRO1 oncogene (melanoma growth stimulating activity, alpha) , MGSA; growth-regulated alpha protein; GROa; MGSA a; NAP 3; SCYB1; MGSA alpha; GRO-alpha(1-73); C-X-C motif chemokine 1; fibroblast secretory protein; neutrophil-activating protein 3; melanoma growth stimulatory activity alpha; GRO1 oncogene (melanoma growth-stimulating activity); GRO1

 Tel: 1-631-559-9269 1-516-512-3133

 Email: info@creative-biomart.com  Fax: 1-631-938-8127

 45-1 Ramsey Road, Shirley, NY 11967, USA

oncogene (melanoma growth stimulating activity, alpha); FSP; GRO1; MGSA; NAP-3; MGSA-a;

Gene ID 2919

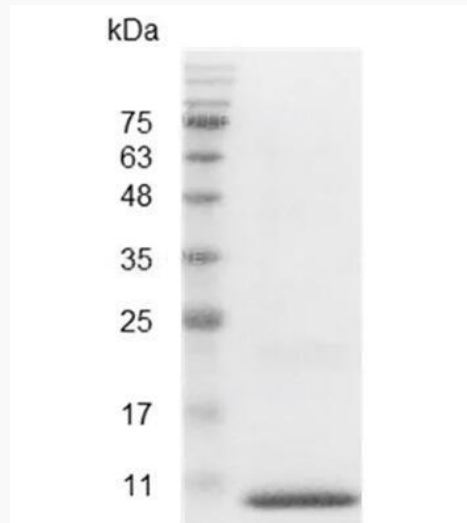
mRNA Refseq NM_001511

Protein Refseq NP_001502

MIM 155730

UniProt ID P09341

**SDS-PAGE analysis
of recombinant
human CXCL1.**



 Tel: 1-631-559-9269 1-516-512-3133

 Email: info@creative-biomart.com  Fax: 1-631-938-8127

 45-1 Ramsey Road, Shirley, NY 11967, USA