

## Recombinant Human CXCL1 Protein (Ala35-Asn107), C-His tagged

Cat. No. CXCL1-2096H Lot. No. (See product label)

### SPECIFICATION

<b>Product Overview</b>	Recombinant human CXCL1 (Ala35-Asn107) fused with C-terminal His tag was expressed in Mammalian cells.
<b>Species</b>	Human
<b>Source</b>	Mammalian Cells
<b>ProteinLength</b>	Ala35-Asn107
<b>Form</b>	Lyophilized powder/frozen liquid
<b>Molecular Mass</b>	8.03 kDa
<b>Purity</b>	>90% as determined by SDS-PAGE
<b>Notes</b>	For research use only.
<b>Storage</b>	Use a manual defrost freezer and avoid repeated freeze thaw cycles. Store at 2 to 8 centigrade for one week. Store at -20 to -80 centigrade for twelve months from the date of receipt.
<b>Storage Buffer</b>	Supplied as solution form in PBS or lyophilized from PBS.
<b>Reconstitution</b>	Reconstitute in sterile water for a stock solution.

 Tel: 1-631-559-9269 1-516-512-3133

 Email: [info@creative-biomart.com](mailto:info@creative-biomart.com)  Fax: 1-631-938-8127

 45-1 Ramsey Road, Shirley, NY 11967, USA

**Shipping** They are shipped out with dry ice/blue ice unless customers require otherwise.

## GENE INFORMATION

**Gene Name** CXCL1 chemokine (C-X-C motif) ligand 1 (melanoma growth stimulating activity, alpha) [ Homo sapiens (human) ]

**Official Symbol** CXCL1

**Synonyms** CXCL1; chemokine (C-X-C motif) ligand 1 (melanoma growth stimulating activity, alpha); fibroblast secretory protein, FSP, GRO1, GRO1 oncogene (melanoma growth stimulating activity, alpha), MGSA; growth-regulated alpha protein; GROa; MGSA a; NAP 3; SCYB1; MGSA alpha; GRO-alpha (1-73); C-X-C motif chemokine 1; fibroblast secretory protein; neutrophil-activating protein 3; melanoma growth stimulatory activity alpha; GRO1 oncogene (melanoma growth-stimulating activity); GRO1 oncogene (melanoma growth stimulating activity, alpha); FSP; GRO1; MGSA; NAP-3; MGSA-a;

**Gene ID** 2919

**mRNA Refseq** NM\_001511

**Protein Refseq** NP\_001502

**MIM** 155730

**UniProt ID** P09341

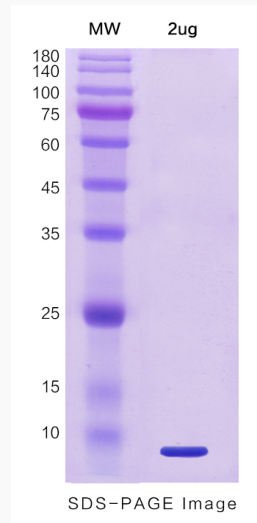
 Tel: 1-631-559-9269 1-516-512-3133

 Email: [info@creative-biomart.com](mailto:info@creative-biomart.com)  Fax: 1-631-938-8127

 45-1 Ramsey Road, Shirley, NY 11967, USA



**SDS-PAGE**



Tel: 1-631-559-9269 1-516-512-3133

Email: [info@creative-biomart.com](mailto:info@creative-biomart.com) Fax: 1-631-938-8127

45-1 Ramsey Road, Shirley, NY 11967, USA