

# Recombinant Human Chemokine (C-X-C motif) Ligand 1 / Growth-regulated Alpha Protein, His-tagged

**Cat. No.** CXCL1-62H    **Lot. No.** (See product label)

## SPECIFICATION

<b>Product Overview</b>	Recombinant human CXCL1 protein was expressed in E.coli and purified by using conventional chromatography techniques, 10.1 kDa (94 aa).
<b>Species</b>	Human
<b>Source</b>	E.coli
<b>Description</b>	CXCL1/GROα is a growth factor for melanoma cells and a chemotaxin for neutrophils. Similar to other alpha chemokines, this protein is potent neutrophil attractant and activator and is also active toward basophils. In addition, CXCL1 protein may be a therapeutic target as well as a diagnostic marker in ovarian cancer.
<b>Sequences of amino acids</b>	MGSSHHHHHH SGLVPRGSH MASVATELRC QCLQTLQGIH PKNIQSVNVK SPGPHCAQTE VIATLKNRGRK ACLNPASPIV KKIIEKMLNS DKS N
<b>Formulation</b>	Liquid. In 20 mM Tris-HCl buffer (pH 8.0) containing 10% glycerol.
<b>Purity</b>	> 90% by SDS - PAGE
<b>Concentration</b>	1 mg/ml (determined by Bradford assay)
<b>Storage</b>	Can be stored at +4°C short term (1-2 weeks). For long term storage, aliquot and store at -20°C or -70°C. Avoid repeated freezing and thawing cycles.

 Tel: 1-631-559-9269    1-516-512-3133

 Email: [info@creative-biomart.com](mailto:info@creative-biomart.com)     Fax: 1-631-938-8127

 45-1 Ramsey Road, Shirley, NY 11967, USA

## GENE INFORMATION

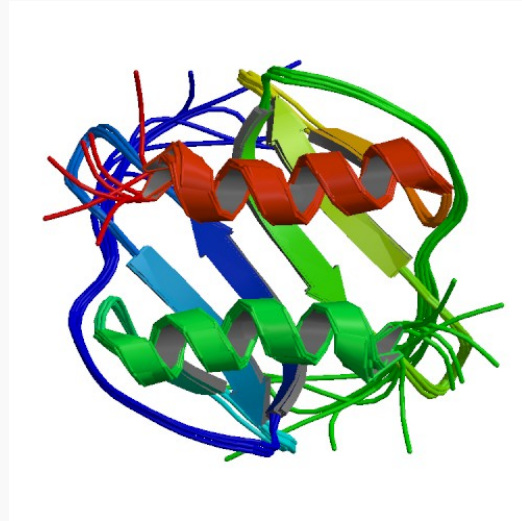
<b>Gene Name</b>	CXCL1 chemokine (C-X-C motif) ligand 1 (melanoma growth stimulating activity, alpha) [ Homo sapiens ]
<b>Synonyms</b>	FSP; GRO; GRO-alpha(1-73); GRO1; GROA; MGSA; MGSA-a; NAP-3; SCYB1; C-X-C motif chemokine 1; GRO1 oncogene (melanoma growth stimulating activity, alpha) ; GRO1 oncogene (melanoma growth-stimulating activity) ; MGSA alpha; Melanoma growth stimulatory activity; Neutrophil-activating protein 3; chemokine (C-X-C motif) ligand 1; chemokine (C-X-C motif) ligand 1 (melanoma growth stimulating activity, alpha); fibroblast secretory protein; melanoma growth stimulatory activity alpha; CXCL1; Growth-regulated alpha protein
<b>Gene ID</b>	2919
<b>mRNA Refseq</b>	NM_001511
<b>Protein Refseq</b>	NP_001502
<b>MIM</b>	155730
<b>UniProt ID</b>	P09341
<b>Chromosome Location</b>	4q21
<b>Pathway</b>	Cytokine-cytokine receptor interaction; Epithelial cell signaling in Helicobacter pylori infection; Signaling by GPCR
<b>Function</b>	chemokine activity; enzyme activator activity; growth factor activity

 Tel: 1-631-559-9269 1-516-512-3133

 Email: [info@creative-biomart.com](mailto:info@creative-biomart.com)  Fax: 1-631-938-8127

 45-1 Ramsey Road, Shirley, NY 11967, USA

PDBrendering based  
on 1mgs. Available  
structures:1mgs,1msg,1



 Tel: 1-631-559-9269 1-516-512-3133

 Email: [info@creative-biomart.com](mailto:info@creative-biomart.com)  Fax: 1-631-938-8127

 45-1 Ramsey Road, Shirley, NY 11967, USA