

# Active Recombinant Human CXCL1 protein, His-GST-tagged

**Cat. No.** CXCL1-769H    **Lot. No.** (See product label)

## SPECIFICATION

<b>Product Overview</b>	Active Recombinant Human CXCL1 protein(P09341)(35~107 aa), fused with N-terminal His tag and GST tag, was expressed in E.coli.
<b>Species</b>	Human
<b>Source</b>	E.coli
<b>ProteinLength</b>	35-107 aa
<b>Form</b>	Lyophilized from sterile 20mM Tris, 150mM NaCl, pH8.0, containing 1mM EDTA, 1mM DTT, 0.01% SKL, 5% Trehalose and Proclin300.
<b>Bio-activity</b>	Neutrophil-activating protein 3 (NAP3) also known as chemokine (C-X-C motif) ligand 1 (CXCL1) is a small cytokine belonging to the CXC chemokine family. NAP3 is expressed by macrophages, neutrophils and epithelial cells, and has neutrophil chemoattractant activity. Thus, chemotaxis assay used 24-well microchemotaxis system was undertaken to detect the chemotactic effect of NAP3 on the human monocytic cell line THP-1. Briefly, THP-1 cells were seeded into the upper chambers (100uL cell suspension, 10 <sup>6</sup> cells/mL in RPMI 1640 with FBS free) and SLC (31.25ng/mL, 62.5ng/mL, 125ng/mL and 250ng/mL diluted separately in serum free RPMI 1640) was added in lower chamber with a polycarbonate filter (8µm pore size) used to separate the two compartments. After incubation at 37°C with 5% CO <sub>2</sub> for 1h, the filter was removed, then cells in low chamber were observed by inverted microscope at low magnification (×100) and the number of migrated cells were

 Tel: 1-631-559-9269    1-516-512-3133

 Email: [info@creative-biomart.com](mailto:info@creative-biomart.com)     Fax: 1-631-938-8127

 45-1 Ramsey Road, Shirley, NY 11967, USA

counted at high magnification (×400) randomly (five fields for each filter). Result shows NAP3 is able to induce migration of THP-1 cells. The migrated THP-1 cells in low chamber at low magnification (×100) were shown. Five fields of each chamber were randomly chosen, and the migrated cells were counted at high magnification (×400). The optimum chemotaxis of NAP3 occurs at 31.25-250ng/mL.

<b>Molecular Mass</b>	38.0kDa
<b>Endotoxin</b>	<1.0EU per 1µg (determined by the LAL method).
<b>Purity</b>	> 97% as determined by SDS-PAGE.
<b>Storage</b>	Avoid repeated freeze/thaw cycles. Store at -20°C for 12 months. Aliquot and store at -80°C for 12 months.
<b>Reconstitution</b>	Reconstitute in 20mM Tris, 150mM NaCl (pH8.0) to a concentration of 0.1-1.0mg/mL. Do not vortex.

## GENE INFORMATION

<b>Gene Name</b>	CXCL1 chemokine (C-X-C motif) ligand 1 (melanoma growth stimulating activity, alpha) [ Homo sapiens ]
<b>Official Symbol</b>	CXCL1
<b>Synonyms</b>	CXCL1; chemokine (C-X-C motif) ligand 1 (melanoma growth stimulating activity, alpha); fibroblast secretory protein, FSP, GRO1, GRO1 oncogene (melanoma growth stimulating activity, alpha), MGSA; growth-regulated alpha protein; GROa; MGSA a; NAP 3; SCYB1; MGSA alpha; GRO-alpha(1-73); C-X-C motif chemokine 1; fibroblast secretory protein; neutrophil-activating protein 3; melanoma growth stimulatory activity alpha; GRO1 oncogene (melanoma growth-stimulating activity); GRO1

 Tel: 1-631-559-9269 1-516-512-3133

 Email: [info@creative-biomart.com](mailto:info@creative-biomart.com)  Fax: 1-631-938-8127

 45-1 Ramsey Road, Shirley, NY 11967, USA

oncogene (melanoma growth stimulating activity, alpha); FSP; GRO1; MGSA; NAP-3; MGSA-a;

**Gene ID** 2919

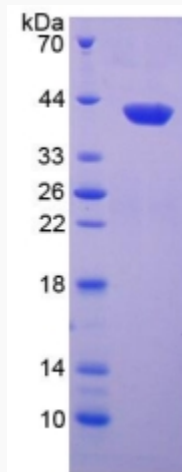
**mRNA Refseq** NM\_001511

**Protein Refseq** NP\_001502

**MIM** 155730

**UniProt ID** P09341

**SDS-PAGE**

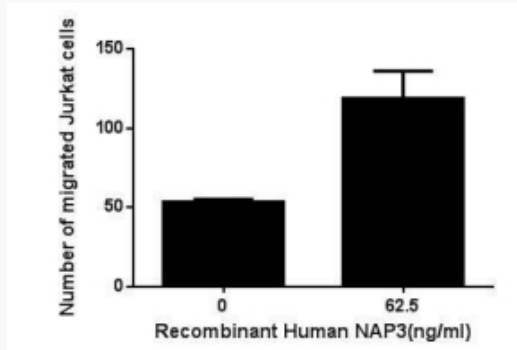


 Tel: 1-631-559-9269 1-516-512-3133

 Email: [info@creative-biomart.com](mailto:info@creative-biomart.com)  Fax: 1-631-938-8127

 45-1 Ramsey Road, Shirley, NY 11967, USA

**Activity**



 Tel: 1-631-559-9269 1-516-512-3133

 Email: [info@creative-biomart.com](mailto:info@creative-biomart.com)  Fax: 1-631-938-8127

 45-1 Ramsey Road, Shirley, NY 11967, USA