

Active GMP Recombinant Porcine CXCL10 Protein, His-Tagged

Cat. No. CXCL10-01P **Lot. No.** (See product label)

SPECIFICATION

| | |
|-------------------------|---|
| Product Overview | GMP Recombinant Porcine CXCL10 Protein, His-Tagged was expressed in Escherichia coli cell-derived in an animal component free process under cGMP guidelines. |
| Species | Porcine |
| Source | E.coli |
| Description | CXCL10 ,belongs to the CXC chemokine family, is also known as IP-10. CXCL10 was originally identified as a responder to IFN-gamma in monocytes, endothelial cells and fibroblasts. The effects of this chemokine can be induced by binding to the cell surface chemokine receptor CXCR3. Research shows that CXCL10 is a chemoattractant for activated T-lymphocytes, monocytes and macrophages. It also has other functions, such as promotion of T cell adhesion to endothelial cell. |
| Form | Lyophilized |
| Bio-activity | Measure by its ability to chemoattract BaF3 cells transfected with human CXCR2. The ED50 for this effect is <4 ng/mL. |
| AA Sequence | PLSRTVRCTCIKISDRPVNPRSLEKLEMIPASQSCPHVEIATMCKKNGEKRCLNPESK TIKNULLKAISKERSKRSPRTQREA with polyhistidine tag at the N-terminus |
| Endotoxin | <0.1 EU per 1 µg of the protein by the LAL method. |

 Tel: 1-631-559-9269 1-516-512-3133

 Email: info@creative-biomart.com  Fax: 1-631-938-8127

 45-1 Ramsey Road, Shirley, NY 11967, USA

| | |
|-----------------------|---|
| Purity | >98% as determined by SDS-PAGE. Ni-NTA chromatography |
| Notes | Please use within one month after protein reconstitution. |
| Storage | Lyophilized protein should be stored at -20°C. Upon reconstitution, protein aliquots should be stored at -20°C or -80°C. |
| Storage Buffer | The protein was lyophilized from a solution containing 1X PBS, pH 7.4. |
| Reconstitution | It is recommended to reconstitute the lyophilized protein in sterile H ₂ O to a concentration not less than 100 µg/mL and incubate the stock solution for at least 20 min to ensure sufficient re-dissolved. |

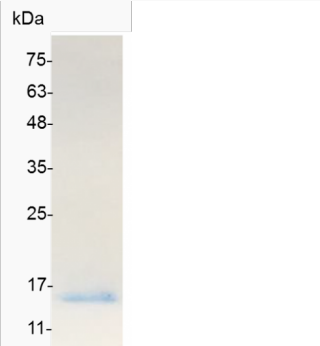
GENE INFORMATION

| | |
|------------------------|--|
| Gene Name | CXCL10 C-X-C motif chemokine ligand 10 [<i>Sus scrofa</i> (pig)] |
| Official Symbol | CXCL10 |
| Gene ID | 494019 |
| mRNA Refseq | NM_001008691.1 |
| Protein Refseq | NP_001008691.1 |
| UniProt ID | A0A4X1SX64 |

 Tel: 1-631-559-9269 1-516-512-3133

 Email: info@creative-biomart.com  Fax: 1-631-938-8127

 45-1 Ramsey Road, Shirley, NY 11967, USA



Tel: 1-631-559-9269 1-516-512-3133

Email: info@creative-biomart.com Fax: 1-631-938-8127

45-1 Ramsey Road, Shirley, NY 11967, USA