

Recombinant Human CXCL10 Protein, MYC/DDK-tagged, C13 and N15-labeled

Cat. No. CXCL10-050H **Lot. No.** (See product label)

SPECIFICATION

Product Overview	CXCL10 MS Standard C13 and N15-labeled recombinant protein (NP_001556) with a C-terminal MYC/DDK tag, was expressed in HEK293 cells.
Species	Human
Source	HEK293
Description	This antimicrobial gene encodes a chemokine of the CXC subfamily and ligand for the receptor CXCR3. Binding of this protein to CXCR3 results in pleiotropic effects, including stimulation of monocytes, natural killer and T-cell migration, and modulation of adhesion molecule expression.
Molecular Mass	10.9 kDa
AA Sequence	MNQTAILICCLIFLTLSGIQGVPLSRTVRCISISNPVNPRSLEKLEIIPASQFCPRVE IIATMKKKGKRCNLNPESKAIKNLLKAVSKERSKRSPTTRTRPLEQKLISEEDLAANDIL DYKDDDDKV
Purity	> 80% as determined by SDS-PAGE and Coomassie blue staining
Stability	Stable for 3 months from receipt of products under proper storage and handling conditions.
Storage	Store at -80 centigrade. Avoid repeated freeze-thaw cycles.

 Tel: 1-631-559-9269 1-516-512-3133

 Email: info@creative-biomart.com  Fax: 1-631-938-8127

 45-1 Ramsey Road, Shirley, NY 11967, USA

Concentration 50 µg/mL as determined by BCA

Storage Buffer 100 mM glycine, 25 mM Tris-HCl, pH 7.3.

GENE INFORMATION

Gene Name [CXCL10 C-X-C motif chemokine ligand 10 \[Homo sapiens \(human\) \]](#)

Official Symbol [CXCL10](#)

Synonyms

CXCL10; C-X-C motif chemokine ligand 10; C7; crg-2; gIP-10; IFI10; INP10; IP-10; mob-1; SCYB10; C-X-C motif chemokine 10; 10 kDa interferon gamma-induced protein; gamma IP10; interferon-inducible cytokine IP-10; protein 10 from interferon (gamma)-induced cell line; small inducible cytokine subfamily B (Cys-X-Cys), member 10; small-inducible cytokine B10;

Gene ID [3627](#)

mRNA Refseq [NM_001565](#)

Protein Refseq [NP_001556](#)

MIM [147310](#)

UniProt ID [P02778](#)

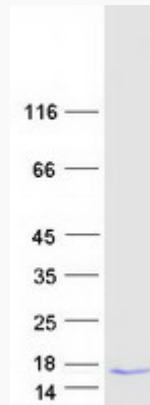
 Tel: 1-631-559-9269 1-516-512-3133

 Email: info@creative-biomart.com  Fax: 1-631-938-8127

 45-1 Ramsey Road, Shirley, NY 11967, USA



SDS-PAGE



☎ Tel: 1-631-559-9269 1-516-512-3133

☎ Email: info@creative-biomart.com ☎ Fax: 1-631-938-8127

☎ 45-1 Ramsey Road, Shirley, NY 11967, USA