

# Active Recombinant Human CXCL10 Protein (Val22-Pro98), N-His tagged, Animal-free, Carrier-free

Cat. No. CXCL10-186H Lot. No. (See product label)

## SPECIFICATION

<b>Product Overview</b>	Recombinant Human CXCL10 Protein (Val22-Pro98) with N-His tag was expressed in E. coli and Animal-free as well as Carrier-free.
<b>Species</b>	Human
<b>Source</b>	E.coli
<b>ProteinLength</b>	Val22-Pro98
<b>Description</b>	C-X-C motif chemokine 10 (CXCL10) also named Interferon gamma-induced protein 10 (IP-10), which is a chemokine of the intercrine alpha family. CXCL10 is a 8.55kDa protein containing 77 amino acid residues. CXCL10 is produced by the several cell types like monocytes and endothelial cells, which are responded for IFN $\gamma$ . CXCL10 is a chemotaxis for T cells, NK cells and macrophages. CXCL10 also binds the CXCR3 that induce the cell migration and activation like T cells and dendritic cells
<b>Form</b>	Lyophilized
<b>Bio-activity</b>	Measure by its ability to chemoattract human PBMCs using a concentration range of 10.0 - 100.0 ng/mL. Note: Results may vary from different PBMC donors.
<b>Molecular Mass</b>	The protein has a calculated MW of 9.45 kDa. The protein migrates as 15 kDa under reducing condition (SDS-PAGE analysis).

 Tel: 1-631-559-9269 1-516-512-3133

 Email: [info@creative-biomart.com](mailto:info@creative-biomart.com)  Fax: 1-631-938-8127

 45-1 Ramsey Road, Shirley, NY 11967, USA

<b>Endotoxin</b>	< 0.1 EU/μg of the protein by the LAL method.
<b>Purity</b>	>98% as determined by SDS-PAGE analysis.
<b>Storage</b>	This product is stable after storage at: -20 centigrade for 12 months in lyophilized state from date of receipt. -20 or -80 centigrade for 1 month under sterile conditions after reconstitution. Avoid repeated freeze/thaw cycles.
<b>Storage Buffer</b>	Lyophilized from a 0.2 μm filtered solution of PBS, pH 7.4.
<b>Reconstitution</b>	It is recommended to reconstitute the lyophilized protein in sterile H <sub>2</sub> O to a concentration not less than 200 μg/mL and incubate the stock solution for at least 20 min to ensure sufficient re-dissolved.
<b>Shipping</b>	The product is shipped with polar packs. Upon receipt, store it immediately at -20 centigrade or lower for long term storage.

## GENE INFORMATION

<b>Gene Name</b>	CXCL10 chemokine (C-X-C motif) ligand 10 [ Homo sapiens (human) ]
<b>Official Symbol</b>	CXCL10
<b>Synonyms</b>	CXCL10; chemokine (C-X-C motif) ligand 10; INP10, SCYB10, small inducible cytokine subfamily B (Cys X Cys), member 10; C-X-C motif chemokine 10; C7; crg 2; gIP 10; IFI10; IP 10; mob 1; gamma IP10; gamma-IP10; small-inducible cytokine B10; interferon-inducible cytokine IP-10; 10 kDa interferon gamma-induced protein; protein 10 from interferon (gamma)-induced cell line; small inducible cytokine subfamily B (Cys-X-Cys), member 10; INP10; IP-10; crg-2; mob-1; SCYB10; gIP-10;

 Tel: 1-631-559-9269 1-516-512-3133

 Email: [info@creative-biomart.com](mailto:info@creative-biomart.com)  Fax: 1-631-938-8127

 45-1 Ramsey Road, Shirley, NY 11967, USA

**Gene ID** 3627

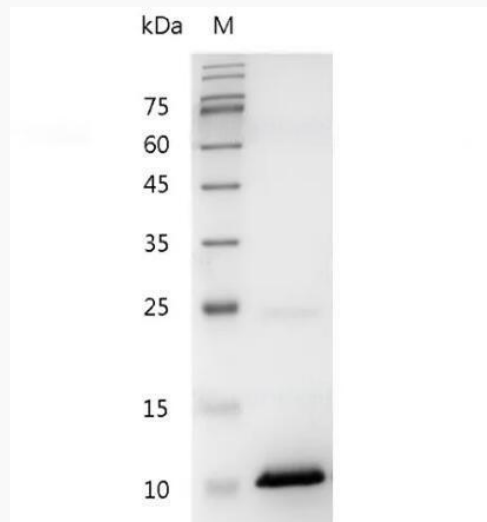
**mRNA Refseq** NM\_001565

**Protein Refseq** NP\_001556

**MIM** 147310

**UniProt ID** P02778

**SDS-PAGE analysis  
of recombinant  
human CXCL10.**



 Tel: 1-631-559-9269 1-516-512-3133

 Email: [info@creative-biomart.com](mailto:info@creative-biomart.com)  Fax: 1-631-938-8127

 45-1 Ramsey Road, Shirley, NY 11967, USA