

## Recombinant Human CXCL10 protein, rFc-tagged

Cat. No. CXCL10-3780H Lot. No. (See product label)

### SPECIFICATION

<b>Product Overview</b>	Recombinant Human CXCL10 protein(P02778)(Val22-Pro98), fused with C-terminal rFc tag, was expressed in HEK293.
<b>Species</b>	Human
<b>Source</b>	HEK293
<b>Form</b>	Lyophilized from 0.22 µm filtered solution in PBS, pH 7.4. Normally 5% trehalose and 5% mannitol are added as protectants before lyophilization.
<b>Molecular Mass</b>	34.9 kDa
<b>Endotoxin</b>	<0.1 EU/µg protein, LAL method
<b>Purity</b>	>90 %, SDS-PAGE
<b>Storage</b>	It is recommended that the protein be aliquoted for optimal storage. Avoid repeated freeze-thaw cycles. Until expiry date, -20°C to -80°C as lyophilized proteins. 3 months, -20°C to -80°C under sterile conditions after reconstitution.
<b>Reconstitution</b>	Briefly centrifuge the tube before opening. Reconstitute at 0.1-0.5 mg/mL in sterile water.

### GENE INFORMATION

 Tel: 1-631-559-9269 1-516-512-3133

 Email: [info@creative-biomart.com](mailto:info@creative-biomart.com)  Fax: 1-631-938-8127

 45-1 Ramsey Road, Shirley, NY 11967, USA

<b>Gene Name</b>	CXCL10 chemokine (C-X-C motif) ligand 10 [ Homo sapiens ]
<b>Official Symbol</b>	CXCL10
<b>Synonyms</b>	CXCL10; chemokine (C-X-C motif) ligand 10; INP10, SCYB10, small inducible cytokine subfamily B (Cys X Cys), member 10; C-X-C motif chemokine 10; C7; crg 2; gIP 10; IFI10; IP 10; mob 1; gamma IP10; gamma-IP10; small-inducible cytokine B10; interferon-inducible cytokine IP-10; 10 kDa interferon gamma-induced protein; protein 10 from interferon (gamma)-induced cell line; small inducible cytokine subfamily B (Cys-X-Cys), member 10; INP10; IP-10; crg-2; mob-1; SCYB10; gIP-10;
<b>Gene ID</b>	3627
<b>mRNA Refseq</b>	NM_001565
<b>Protein Refseq</b>	NP_001556
<b>MIM</b>	147310
<b>UniProt ID</b>	P02778

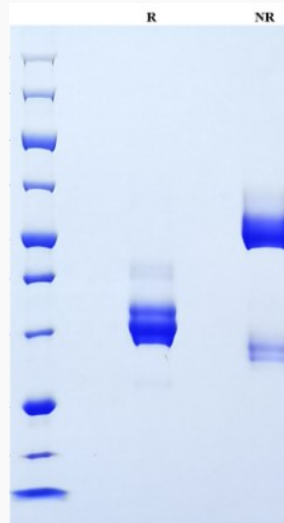
 Tel: 1-631-559-9269 1-516-512-3133

 Email: [info@creative-biomart.com](mailto:info@creative-biomart.com)  Fax: 1-631-938-8127

 45-1 Ramsey Road, Shirley, NY 11967, USA



SDS-PAGE



Tel: 1-631-559-9269 1-516-512-3133

Email: [info@creative-biomart.com](mailto:info@creative-biomart.com) Fax: 1-631-938-8127

45-1 Ramsey Road, Shirley, NY 11967, USA