

Recombinant Human CXCL10 Protein, His-tagged

Cat. No. CXCL10-524H Lot. No. (See product label)

SPECIFICATION

Product Overview	Recombinant Human CXCL10(Val22~Pro98) fused with His tag at N-terminal was expressed in E. coli.
Species	Human
Source	E.coli
ProteinLength	Val22~Pro98
Description	This antimicrobial gene encodes a chemokine of the CXC subfamily and ligand for the receptor CXCR3. Binding of this protein to CXCR3 results in pleiotropic effects, including stimulation of monocytes, natural killer and T-cell migration, and modulation of adhesion molecule expression.
Form	100mMNaHCO ₃ , 500mMNaCl, pH8.3, containing 1mM EDTA, 1mM DTT, 0.01% SKL, 5% Trehalose and Proclin300.
Molecular Mass	12.5kDa
Identity	Reconstitute in 100mM NaHCO ₃ , 500mM NaCl (pH8.3) to a concentration of 0.1-1.0 mg/mL. Do not vortex.
Endotoxin	<1.0EU per 1g (determined by the LAL method)
Purity	> 95%

 Tel: 1-631-559-9269 1-516-512-3133

 Email: info@creative-biomart.com  Fax: 1-631-938-8127

 45-1 Ramsey Road, Shirley, NY 11967, USA

Applications	Positive Control; Immunogen; SDS-PAGE; WB. If bio-activity of the protein is needed, please check active protein
Stability	The thermal stability is described by the loss rate. The loss rate was determined by accelerated thermal degradation test, that is, incubate the protein at 37 centigrade for 48h, and no obvious degradation and precipitation were observed. The loss rate is less than 5% within the expiration date under appropriate storage condition.
Storage	Avoid repeated freeze/thaw cycles. Store at 2-8 centigrade for one month. Aliquot and store at -80 centigrade for 12 months.
Reconstitution	Reconstitute in PBS or others
GENE INFORMATION	
Gene Name	CXCL10 chemokine (C-X-C motif) ligand 10 [Homo sapiens]
Official Symbol	CXCL10
Synonyms	CXCL10; chemokine (C-X-C motif) ligand 10; INP10, SCYB10, small inducible cytokine subfamily B (Cys X Cys), member 10; C-X-C motif chemokine 10; C7; crg 2; gIP 10; IFI10; IP 10; mob 1; gamma IP10; gamma-IP10; small-inducible cytokine B10; interferon-inducible cytokine IP-10; 10 kDa interferon gamma-induced protein; protein 10 from interferon (gamma)-induced cell line; small inducible cytokine subfamily B (Cys-X-Cys), member 10; INP10; IP-10; crg-2; mob-1; SCYB10; gIP-10;
Gene ID	3627
mRNA Refseq	NM_001565
Protein Refseq	NP_001556

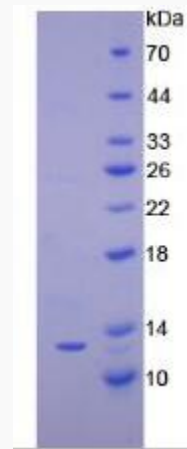
 Tel: 1-631-559-9269 1-516-512-3133

 Email: info@creative-biomart.com  Fax: 1-631-938-8127

 45-1 Ramsey Road, Shirley, NY 11967, USA

MIM 147310

UniProt ID P02778



 Tel: 1-631-559-9269 1-516-512-3133

 Email: info@creative-biomart.com  Fax: 1-631-938-8127

 45-1 Ramsey Road, Shirley, NY 11967, USA