

Active Recombinant Rhesus CXCL10 protein

Cat. No. CXCL10-65R Lot. No. (See product label)

SPECIFICATION

Product Overview	Active Recombinant Rhesus CXCL10 protein(Q8MIZ1)(22-98 aa) was expressed in E.coli.
Species	Rhesus
Source	E.coli
ProteinLength	22-98 aa
Form	Lyophilized from a 0.2 µ filtered concentrated solution in PBS, pH 7.4.
Bio-activity	Fully biologically active when compared to standard. The biological activity determined by a chemotaxis bioassay using human peripheral blood T-lymphocytes is in a concentration range of 10-50 ng/ml.
Molecular Mass	Approximately 8.7 kDa, a single non-glycosylated polypeptide chain containing 77 amino acids.
AASequence	IPLSRTVRCT CISISNQPVN PRSLEKLEII PPSQFCPHVE IIATMKKKGE KRCLNPESKA IKNLLKAVSK ERSKRSP
Endotoxin	Less than 1 EU/g of rRhIP-10/CXCL10 as determined by LAL method.
Purity	>97% by SDS-PAGE and HPLC analyses.

 Tel: 1-631-559-9269 1-516-512-3133

 Email: info@creative-biomart.com  Fax: 1-631-938-8127

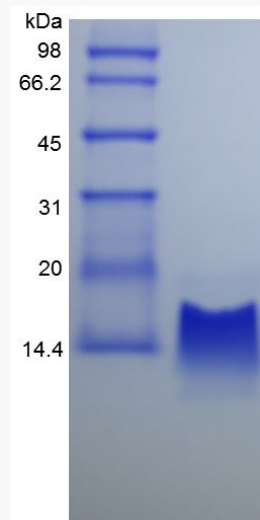
 45-1 Ramsey Road, Shirley, NY 11967, USA


Storage

Use a manual defrost freezer and avoid repeated freeze-thaw cycles. - 12 months from date of receipt, -20 to -70 °C as supplied. - 1 month, 2 to 8 °C under sterile conditions after reconstitution. - 3 months, -20 to -70 °C under sterile conditions after reconstitution.

Reconstitution

We recommend that this vial be briefly centrifuged prior to opening to bring the contents to the bottom. Reconstitute in sterile distilled water or aqueous buffer containing 0.1 % BSA to a concentration of 0.1-1.0 mg/mL. Stock solutions should be apportioned into working aliquots and stored at ≤ -20 °C. Further dilutions should be made in appropriate buffered solutions.

SDS-PAGE

 Tel: 1-631-559-9269 1-516-512-3133

 Email: info@creative-biomart.com  Fax: 1-631-938-8127

 45-1 Ramsey Road, Shirley, NY 11967, USA