

Recombinant Bovine CXCL11 Protein, His-tagged

Cat. No. CXCL11-201B Lot. No. (See product label)

SPECIFICATION

Product Overview	Recombinant Bovine CXCL11(Phe22~Ile100) fused with His tag at N-terminal was expressed in E. coli.
Species	Bovine
Source	E.coli
ProteinLength	Phe22~Ile100
Form	PBS, pH7.4, containing 0.01% SKL, 1mM DTT, 5% Trehalose and Proclin300.
Molecular Mass	12.5kDa
Endotoxin	<1.0EU per 1ug (determined by the LAL method)
Purity	> 95%
Applications	Positive Control; Immunogen; SDS-PAGE; WB. If bio-activity of the protein is needed, please check active protein
Stability	The thermal stability is described by the loss rate. The loss rate was determined by accelerated thermal degradation test, that is, incubate the protein at 37 centigrade for 48h, and no obvious degradation and precipitation were observed. The loss rate is less than 5% within the expiration date under appropriate storage condition.

 Tel: 1-631-559-9269 1-516-512-3133

 Email: info@creative-biomart.com  Fax: 1-631-938-8127

 45-1 Ramsey Road, Shirley, NY 11967, USA

Storage Avoid repeated freeze/thaw cycles. Store at 2-8 centigrade for one month. Aliquot and store at -80 centigrade for 12 months.

Reconstitution Reconstitute in PBS or others

GENE INFORMATION

Gene Name CXCL11 C-X-C motif chemokine ligand 11 [Bos taurus]

Official Symbol CXCL11

Synonyms I-TAC; small-inducible cytokine B11

Gene ID 516104

mRNA Refseq NM_001113173

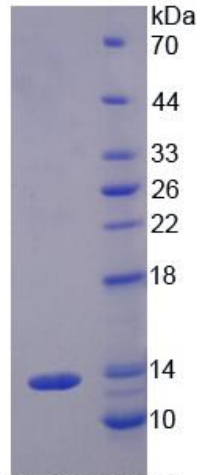
Protein Refseq NP_001106644

UniProt ID A9QWQ1

 Tel: 1-631-559-9269 1-516-512-3133

 Email: info@creative-biomart.com  Fax: 1-631-938-8127

 45-1 Ramsey Road, Shirley, NY 11967, USA



15% SDS-PAGE

Tel: 1-631-559-9269 1-516-512-3133

Email: info@creative-biomart.com Fax: 1-631-938-8127

45-1 Ramsey Road, Shirley, NY 11967, USA