

Active Recombinant Human CXCL12, Fc tagged

Cat. No. CXCL12-20H **Lot. No.** (See product label)

SPECIFICATION

Product Overview	Active Recombinant Human CXCL12(NP_000600.1) (Lys 22-Met 93) was expressed in Human Cells with the fused Fc region of human IgG1 at the N-terminus.
Species	Human
Source	Human Cells
ProteinLength	22-93 aa
Form	Lyophilized from sterile PBS, pH 7.4.
Bio-activity	Measured by its ability to bind biotinylated recombinant human DPPIV in a functional ELISA.
Molecular Mass	The recombinant human SDF1/Fc is a disulfide-linked homodimeric protein. The reduced monomer consists of 309 amino acids and predicts a molecular mass of 35.2 kDa. As a result of glycosylation, rhSDF1/Fc monomer is approximately 43 kDa in SDS-PAGE under reducing conditions.
Endotoxin	< 1.0 EU per µg of the protein as determined by the LAL method.
Purity	> 95 % as determined by SDS-PAGE
Storage	Store it under sterile conditions at -20°C to -80°C upon receiving. Recommend to aliquot the protein into smaller quantities for optimal storage. Avoid repeated freeze-

 Tel: 1-631-559-9269 1-516-512-3133

 Email: info@creative-biomart.com  Fax: 1-631-938-8127

 45-1 Ramsey Road, Shirley, NY 11967, USA

thaw cycles.

Reconstitution

It is recommended that sterile water be added to the vial to prepare a stock solution of 0.2 ug/ul. Centrifuge the vial at 4°C before opening to recover the entire contents.

GENE INFORMATION

Gene Name CXCL12 chemokine (C-X-C motif) ligand 12 [Homo sapiens]

Official Symbol CXCL12

Synonyms

CXCL12; chemokine (C-X-C motif) ligand 12; SDF1, SDF1A, SDF1B, stromal cell derived factor 1; stromal cell-derived factor 1; PBSF; SCYB12; SDF 1a; SDF 1b; TLSF a; TLSF b; TPAR1; intercrine reduced in hepatomas; pre-B cell growth-stimulating factor; IRH; SDF1; TLSF; SDF1A; SDF1B;

Gene ID 6387

mRNA Refseq NM_000609

Protein Refseq NP_000600

MIM 600835

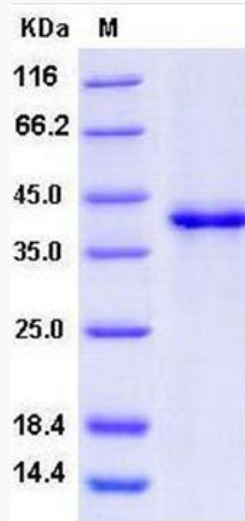
UniProt ID P48061

 Tel: 1-631-559-9269 1-516-512-3133

 Email: info@creative-biomart.com  Fax: 1-631-938-8127

 45-1 Ramsey Road, Shirley, NY 11967, USA

SDS-PAGE



 Tel: 1-631-559-9269 1-516-512-3133

 Email: info@creative-biomart.com  Fax: 1-631-938-8127

 45-1 Ramsey Road, Shirley, NY 11967, USA