

Recombinant Human CXCL12 Protein (Ser19-Met93)

Cat. No. CXCL12-2202H Lot. No. (See product label)

SPECIFICATION

Product Overview	Recombinant human CXCL12 (Ser19-Met93) without tag was expressed in E. coli.
Species	Human
Source	E.coli
ProteinLength	Ser19-Met93
Form	Lyophilized powder/frozen liquid
Molecular Mass	8.25 kDa
Purity	>90% as determined by SDS-PAGE
Notes	For research use only.
Storage	Use a manual defrost freezer and avoid repeated freeze thaw cycles. Store at 2 to 8 centigrade for one week. Store at -20 to -80 centigrade for twelve months from the date of receipt.
Storage Buffer	Supplied as solution form in PBS or lyophilized from PBS.
Reconstitution	Reconstitute in sterile water for a stock solution.
Shipping	They are shipped out with dry ice/blue ice unless customers require otherwise.

 Tel: 1-631-559-9269 1-516-512-3133

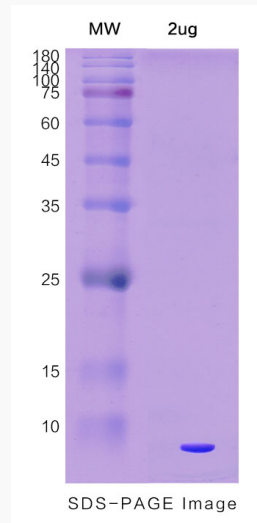
 Email: info@creative-biomart.com  Fax: 1-631-938-8127

 45-1 Ramsey Road, Shirley, NY 11967, USA

GENE INFORMATION**Gene Name** CXCL12 chemokine (C-X-C motif) ligand 12 [Homo sapiens (human)]**Official Symbol** CXCL12**Synonyms** CXCL12; chemokine (C-X-C motif) ligand 12; SDF1, SDF1A, SDF1B, stromal cell derived factor 1; stromal cell-derived factor 1; PBSF; SCYB12; SDF 1a; SDF 1b; TLSF a; TLSF b; TPAR1; intercrine reduced in hepatomas; pre-B cell growth-stimulating factor; IRH; SDF1; TLSF; SDF1A; SDF1B;**Gene ID** 6387**mRNA Refseq** NM_000609**Protein Refseq** NP_000600**MIM** 600835**UniProt ID** P48061 Tel: 1-631-559-9269 1-516-512-3133 Email: info@creative-biomart.com  Fax: 1-631-938-8127 45-1 Ramsey Road, Shirley, NY 11967, USA



SDS-PAGE



Tel: 1-631-559-9269 1-516-512-3133

Email: info@creative-biomart.com Fax: 1-631-938-8127

45-1 Ramsey Road, Shirley, NY 11967, USA