

# Recombinant Human chemokine (X-C motif) ligand 12 Protein, Tag Free

Cat. No. CXCL12-242H Lot. No. (See product label)

## SPECIFICATION

### Product Overview

Recombinant human CXCL12/SDF-1 protein (P48061-2) (Lys 22-Lys 89) without tag was expressed in HEK293.

### Species

Human

### Source

HEK293

### ProteinLength

22-89aa

### Description

The stromal cell derived factor 1 (SDF1, CXCL12) is a small, pro-inflammatory chemoattractant cytokine that regulates leukocyte trafficking through interactions with its cognate 7-transmembrane G protein-coupled receptors. The SDF1 receptor, CXCR4, also serves as a coreceptor for the entry of human immunodeficiency virus into target cells. SDF1 may regulate homing and maintenance of CXCR4-expressing stem or progenitor cells, including embryonic and many somatic stem cells. Many cancer cells express CXCR4, suggesting that SDF1 plays a role in cancer metastasis. Alternative splicing and differential processing during maturation produce a pair of SDF1 isoforms (SDF1 $\alpha$  and SDF1 $\beta$ ) that have different properties and biological activities. Additional isoforms of SDF1 have been reported.

### Tag

Non

### Molecular Mass

8.3 kDa

 Tel: 1-631-559-9269 1-516-512-3133

 Email: [info@creative-biomart.com](mailto:info@creative-biomart.com)  Fax: 1-631-938-8127

 45-1 Ramsey Road, Shirley, NY 11967, USA

<b>Endotoxin</b>	Less than 1.0 EU/μg by the LAL method.
<b>Purity</b>	>95% as determined by SDS-PAGE.
<b>Storage</b>	Please avoid repeated freeze-thaw cycles. Samples are stable for up to twelve months from date of receipt at -20 to -80 centigrade. It is recommended that aliquot the reconstituted solution to minimize freeze-thaw cycles.
<b>Storage Buffer</b>	Lyophilized from a 0.2 μm filtered solution of PBS, pH7.4, 5% Trehalose, 5% mannitol.
<b>Reconstitution</b>	Reconstitute at 250 μg/mL in sterile water.
<b>GENE INFORMATION</b>	
<b>Gene Name</b>	CXCL12 chemokine (C-X-C motif) ligand 12 [ Homo sapiens (human) ]
<b>Official Symbol</b>	CXCL12
<b>Synonyms</b>	CXCL12; chemokine (C-X-C motif) ligand 12; SDF1, SDF1A, SDF1B, stromal cell derived factor 1; stromal cell-derived factor 1; PBSF; SCYB12; SDF 1a; SDF 1b; TLSF a; TLSF b; TPAR1; intercrine reduced in hepatomas; pre-B cell growth-stimulating factor; IRH; SDF1; TLSF; SDF1A; SDF1B;
<b>Gene ID</b>	6387
<b>mRNA Refseq</b>	NM_000609
<b>Protein Refseq</b>	NP_000600
<b>MIM</b>	600835

 Tel: 1-631-559-9269 1-516-512-3133

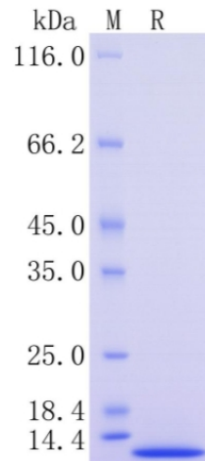
 Email: [info@creative-biomart.com](mailto:info@creative-biomart.com)  Fax: 1-631-938-8127

 45-1 Ramsey Road, Shirley, NY 11967, USA

UniProt ID

P48061

Protein on SDS-  
PAGE under  
reducing (R)  
condition.



 Tel: 1-631-559-9269 1-516-512-3133

 Email: [info@creative-biomart.com](mailto:info@creative-biomart.com)  Fax: 1-631-938-8127

 45-1 Ramsey Road, Shirley, NY 11967, USA