

Active Recombinant Human CXCL12 Protein (Val24-Asn88), C-His tagged, Animal-free, Carrier-free

Cat. No. CXCL12-273H Lot. No. (See product label)

SPECIFICATION

Product Overview	Recombinant Human CXCL12 Protein (Val24-Asn88) with C-His tag was expressed in E. coli and Animal-free as well as Carrier-free.
Species	Human
Source	E.coli
ProteinLength	Val24-Asn88
Description	C-X-C motif chemokine 12 (CXCL12) also named stromal cell-derived factor 1 (SDF-1), which is a chemokine of the intercrine alpha family. CXCL12 is a 19.5kDa protein containing 167 amino acid residues. The function of CXCL12 include the hematopoiesis, angiogenesis embryogenesis, inflammation and angiogenesis. CXCL12 activated by the IL-1, TNF or lipopolysaccharide and induce the immune response in leukocytes.
Form	Lyophilized
Bio-activity	Measure by its ability to chemoattract BaF3 cells transfected with human CXCR4. The ED50 for this effect is < 0.5 ng/mL.
Molecular Mass	The protein has a calculated MW of 8.55 kDa. The protein migrates as 10 kDa under reducing condition (SDS-PAGE analysis).

 Tel: 1-631-559-9269 1-516-512-3133

 Email: info@creative-biomart.com  Fax: 1-631-938-8127

 45-1 Ramsey Road, Shirley, NY 11967, USA

Endotoxin	< 0.1 EU/μg of the protein by the LAL method.
Purity	>98% as determined by SDS-PAGE analysis.
Storage	This product is stable after storage at: -20 centigrade for 12 months in lyophilized state from date of receipt. -20 or -80 centigrade for 1 month under sterile conditions after reconstitution. Avoid repeated freeze/thaw cycles.
Storage Buffer	Lyophilized from a 0.2 μm filtered solution containing 20 mM sodium citrate and 0.1 M NaCl, pH 4.5.
Reconstitution	It is recommended to reconstitute the lyophilized protein in sterile H ₂ O to a concentration not less than 200 μg/mL and incubate the stock solution for at least 20 min to ensure sufficient re-dissolved.
Shipping	The product is shipped with polar packs. Upon receipt, store it immediately at -20 centigrade or lower for long term storage.

GENE INFORMATION

Gene Name	CXCL12 chemokine (C-X-C motif) ligand 12 [Homo sapiens (human)]
Official Symbol	CXCL12
Synonyms	CXCL12; chemokine (C-X-C motif) ligand 12; SDF1, SDF1A, SDF1B, stromal cell derived factor 1; stromal cell-derived factor 1; PBSF; SCYB12; SDF 1a; SDF 1b; TLSF a; TLSF b; TPAR1; intercrine reduced in hepatomas; pre-B cell growth-stimulating factor; IRH; SDF1; TLSF; SDF1A; SDF1B;
Gene ID	6387

 Tel: 1-631-559-9269 1-516-512-3133

 Email: info@creative-biomart.com  Fax: 1-631-938-8127

 45-1 Ramsey Road, Shirley, NY 11967, USA

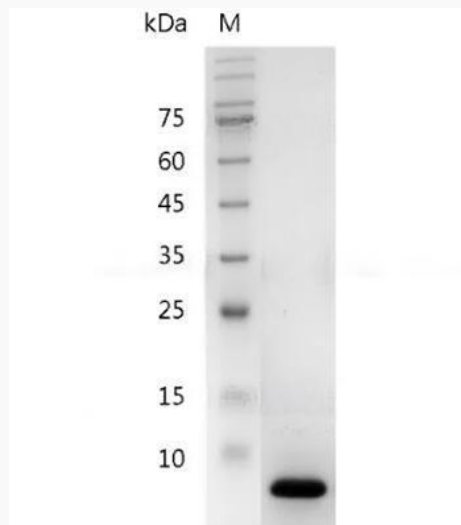
mRNA Refseq [NM_000609](#)

Protein Refseq [NP_000600](#)

MIM [600835](#)

UniProt ID [P48061](#)

**SDS-PAGE analysis
of recombinant
human CXCL12 (aa
24-88).**



 Tel: 1-631-559-9269 1-516-512-3133

 Email: info@creative-biomart.com  Fax: 1-631-938-8127

 45-1 Ramsey Road, Shirley, NY 11967, USA