

## Recombinant Human CXCL12 protein

Cat. No. CXCL12-306H Lot. No. (See product label)

### SPECIFICATION

<b>Product Overview</b>	Recombinant Human CXCL12 protein(P48061-1) (Lys 22-Met 93) was expressed and purified in E.coli.
<b>Species</b>	Human
<b>Source</b>	E.coli
<b>ProteinLength</b>	22-93 aa
<b>Form</b>	Lyophilized from sterile PBS, pH 7.4.
<b>Molecular Mass</b>	The recombinant human CXCL12 consists of 73 amino acids and predicts a molecular mass of 8.6 kDa. It migrates as an approximately 12 kDa band in SDS-PAGE under reducing conditions.
<b>Purity</b>	> 95 % as determined by SDS-PAGE
<b>Storage</b>	Store it under sterile conditions at -20°C to -80°C upon receiving. Recommend to aliquot the protein into smaller quantities for optimal storage. Avoid repeated freeze-thaw cycles.
<b>Reconstitution</b>	It is recommended that sterile water be added to the vial to prepare a stock solution of 0.2 ug/ul. Centrifuge the vial at 4°C before opening to recover the entire contents.

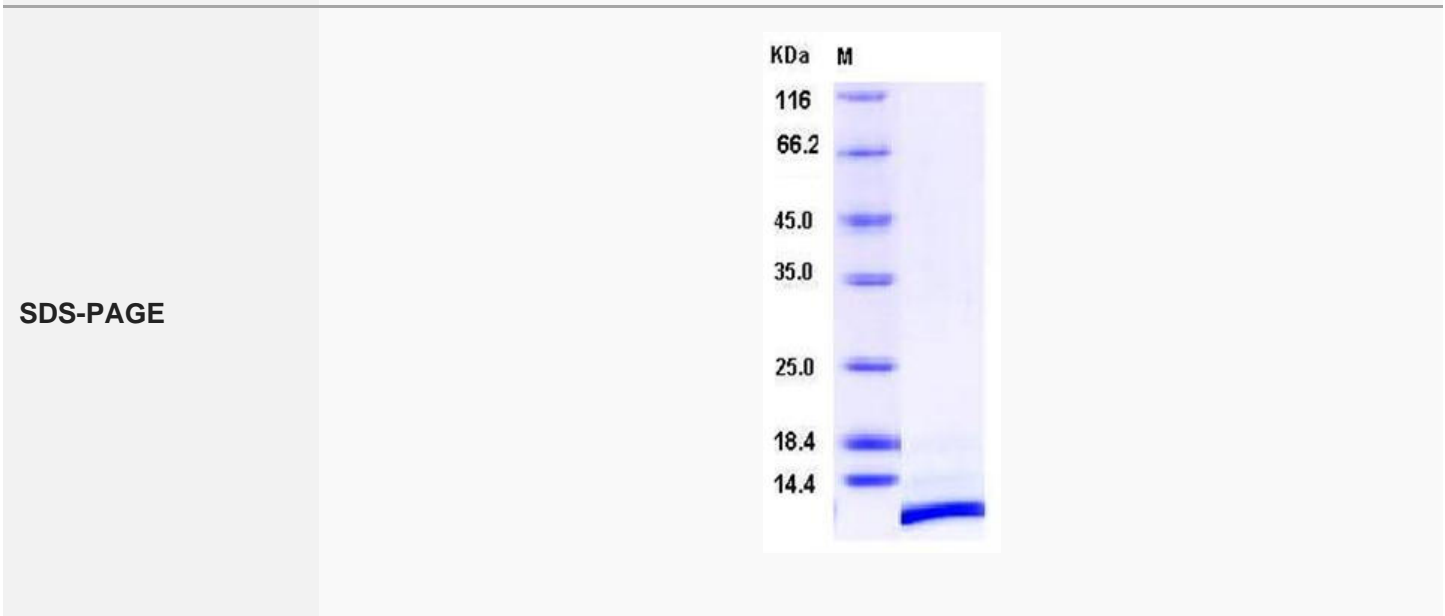
### GENE INFORMATION

 Tel: 1-631-559-9269 1-516-512-3133

 Email: [info@creative-biomart.com](mailto:info@creative-biomart.com)  Fax: 1-631-938-8127

 45-1 Ramsey Road, Shirley, NY 11967, USA

<b>Gene Name</b>	CXCL12 chemokine (C-X-C motif) ligand 12 [ Homo sapiens ]
<b>Official Symbol</b>	CXCL12
<b>Synonyms</b>	CXCL12; chemokine (C-X-C motif) ligand 12; SDF1, SDF1A, SDF1B, stromal cell derived factor 1; stromal cell-derived factor 1; PBSF; SCYB12; SDF 1a; SDF 1b; TLSF a; TLSF b; TPAR1; intercrine reduced in hepatomas; pre-B cell growth-stimulating factor; IRH; SDF1; TLSF; SDF1A; SDF1B;
<b>Gene ID</b>	6387
<b>mRNA Refseq</b>	NM_000609
<b>Protein Refseq</b>	NP_000600
<b>MIM</b>	600835
<b>UniProt ID</b>	P48061



Tel: 1-631-559-9269 1-516-512-3133

Email: [info@creative-biomart.com](mailto:info@creative-biomart.com) Fax: 1-631-938-8127

45-1 Ramsey Road, Shirley, NY 11967, USA