

Recombinant Canine CXCL12 Protein

Cat. No. CXCL12-3920C Lot. No. (See product label)

SPECIFICATION

Product Overview	Recombinant Canine CXCL12 was produced in E. coli.
Species	Canine
Source	E.coli
Form	20 mM Tris-HCl, 0.10 M NaCl, pH 8.0
Molecular Mass	~25 kDa
AA sequence	MNHHHHHHGGSGGSGSDSEVNQEAKPEVKPEVKPETHINLKVSDGSSEIFFKIKKT TPLRRLMEAFAKRQGGKEMDSLRFYDGIQADQAPEDLDMEDNDIIEAHREQIGGK PVSLSYRCPFRFFESHIANVVKHLKILNTPNCALQIVARLKNNSRQVCIDPKLKIWIQ EYLEKALNK
Endotoxin	< 1.0 EU per µg of the protein as determined by the LAL method
Purity	>90%, by SDS-PAGE

GENE INFORMATION

Gene Name	CXCL12 chemokine (C-X-C motif) ligand 12 [Canis lupus familiaris(dog)]
Official Symbol	CXCL12

 Tel: 1-631-559-9269 1-516-512-3133

 Email: info@creative-biomart.com  Fax: 1-631-938-8127

 45-1 Ramsey Road, Shirley, NY 11967, USA

Synonyms	CXCL12; chemokine (C-X-C motif) ligand 12; SDF1; stromal cell-derived factor 1; chemokine (C-X-C motif) ligand 12 (stromal cell-derived factor 1)
Gene ID	449622
mRNA Refseq	NM_001128097
Protein Refseq	NP_001121569

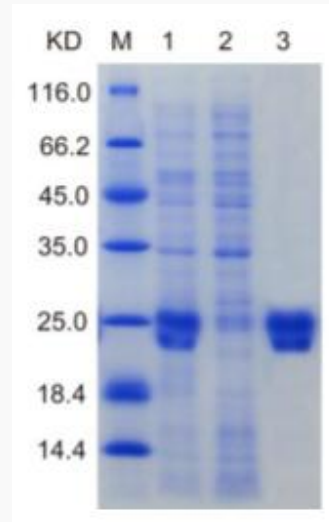


Fig.1. SDS-PAGE analysis of Canine CXCL12 protein
 Lane M: Protein Marker, Lane 1: Un-purified, Lane 2: Flow through, Lane 3: Elution