

# Recombinant Human CXCL12 Protein, Myc/DDK-tagged, C13 and N15-labeled

**Cat. No.** CXCL12-5382H    **Lot. No.** (See product label)

## SPECIFICATION

<b>Product Overview</b>	CXCL12 MS Standard C13 and N15-labeled recombinant protein (NP_954637) with a C-terminal MYC/DDK tag, was expressed in HEK293 cells.
<b>Species</b>	Human
<b>Source</b>	HEK293
<b>Description</b>	<p>This antimicrobial gene encodes a stromal cell-derived alpha chemokine member of the intercrine family. The encoded protein functions as the ligand for the G-protein coupled receptor, chemokine (C-X-C motif) receptor 4, and plays a role in many diverse cellular functions, including embryogenesis, immune surveillance, inflammation response, tissue homeostasis, and tumor growth and metastasis. Mutations in this gene are associated with resistance to human immunodeficiency virus type 1 infections. Multiple transcript variants encoding different isoforms have been found for this gene.</p>
<b>Molecular Mass</b>	9.9 kDa
<b>AA Sequence</b>	<p>MNAKVVVVVLVLVTALCLSDGKPVLSYRCPFRFFESHVARANVKHLKILNTPNCAL            QIVARLKNNNRQVCIDPKLKWIQEYLEKALNKTRTRPLEQKLISEEDLAANDILDYKDD            DDKV</p>
<b>Purity</b>	> 80% as determined by SDS-PAGE and Coomassie blue staining

 Tel: 1-631-559-9269    1-516-512-3133

 Email: [info@creative-biomart.com](mailto:info@creative-biomart.com)     Fax: 1-631-938-8127

 45-1 Ramsey Road, Shirley, NY 11967, USA

<b>Stability</b>	Stable for 3 months from receipt of products under proper storage and handling conditions.
<b>Storage</b>	Store at -80 centigrade. Avoid repeated freeze-thaw cycles.
<b>Concentration</b>	50 µg/mL as determined by BCA
<b>Storage Buffer</b>	100 mM glycine, 25 mM Tris-HCl, pH 7.3.

## GENE INFORMATION

<b>Gene Name</b>	CXCL12 C-X-C motif chemokine ligand 12 [ Homo sapiens (human) ]
<b>Official Symbol</b>	CXCL12
<b>Synonyms</b>	CXCL12; chemokine (C-X-C motif) ligand 12; SDF1, SDF1A, SDF1B, stromal cell derived factor 1; stromal cell-derived factor 1; PBSF; SCYB12; SDF 1a; SDF 1b; TLSF a; TLSF b; TPAR1; intercrine reduced in hepatomas; pre-B cell growth-stimulating factor; IRH; SDF1; TLSF; SDF1A; SDF1B;
<b>Gene ID</b>	6387
<b>mRNA Refseq</b>	NM_199168
<b>Protein Refseq</b>	NP_954637
<b>MIM</b>	600835
<b>UniProt ID</b>	P48061

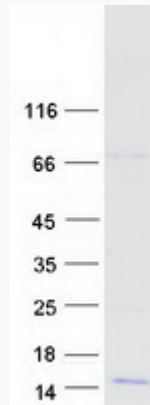
 Tel: 1-631-559-9269 1-516-512-3133

 Email: [info@creative-biomart.com](mailto:info@creative-biomart.com)  Fax: 1-631-938-8127

 45-1 Ramsey Road, Shirley, NY 11967, USA



SDS-PAGE



Tel: 1-631-559-9269 1-516-512-3133

Email: [info@creative-biomart.com](mailto:info@creative-biomart.com) Fax: 1-631-938-8127

45-1 Ramsey Road, Shirley, NY 11967, USA