

## Active Recombinant Human CXCL12 protein

Cat. No. CXCL12-57H Lot. No. (See product label)

### SPECIFICATION

<b>Product Overview</b>	Active Recombinant Human CXCL12 protein(P48061)(21-119 aa) was expressed in E.coli.
<b>Species</b>	Human
<b>Source</b>	E.coli
<b>ProteinLength</b>	21-119 aa
<b>Form</b>	Lyophilized from a 0.2 µ filtered concentrated solution in PBS, pH 7.4.
<b>Bio-activity</b>	Fully biologically active when compared to standard. The biological activity determined by a chemotaxis bioassay using PHA and rHuIL-2 activated human peripheral blood T-lymphocytes is in a concentration range of 30-100 ng/ml.
<b>Molecular Mass</b>	Approximately 11.6 kDa, a single non-glycosylated polypeptide chain containing 99 amino acid residues.
<b>AASequence</b>	GKPVLSYRC PCRFFESHVA RANVKHLKIL NTPNCALQIV ARLKNNNRQV CIDPKLKWIQ EYLEKALNKG RREEKVGKKE KIGKKKRQKK RCAAQKRKN
<b>Endotoxin</b>	Less than 0.1 EU/µg of rHuSDF-1γ/CXCL12γ as determined by LAL method.
<b>Purity</b>	>96% by SDS-PAGE and HPLC analyses.

 Tel: 1-631-559-9269 1-516-512-3133

 Email: [info@creative-biomart.com](mailto:info@creative-biomart.com)  Fax: 1-631-938-8127

 45-1 Ramsey Road, Shirley, NY 11967, USA

**Storage**

Use a manual defrost freezer and avoid repeated freeze-thaw cycles. - 12 months from date of receipt, -20 to -70 °C as supplied. - 1 month, 2 to 8 °C under sterile conditions after reconstitution. - 3 months, -20 to -70 °C under sterile conditions after reconstitution.

**Reconstitution**

We recommend that this vial be briefly centrifuged prior to opening to bring the contents to the bottom. Reconstitute in sterile distilled water or aqueous buffer containing 0.1 % BSA to a concentration of 0.1-1.0 mg/mL. Stock solutions should be apportioned into working aliquots and stored at ≤ -20 °C. Further dilutions should be made in appropriate buffered solutions.

## GENE INFORMATION

**Gene Name**

CXCL12 chemokine (C-X-C motif) ligand 12 [ Homo sapiens ]

**Official Symbol**

CXCL12

**Synonyms**

CXCL12; chemokine (C-X-C motif) ligand 12; SDF1, SDF1A, SDF1B, stromal cell derived factor 1; stromal cell-derived factor 1; PBSF; SCYB12; SDF 1a; SDF 1b; TLSF a; TLSF b; TPAR1; intercrine reduced in hepatomas; pre-B cell growth-stimulating factor; IRH; SDF1; TLSF; SDF1A; SDF1B;

**Gene ID**

6387

**mRNA Refseq**

NM\_000609

**Protein Refseq**

NP\_000600

**MIM**

600835

**UniProt ID**

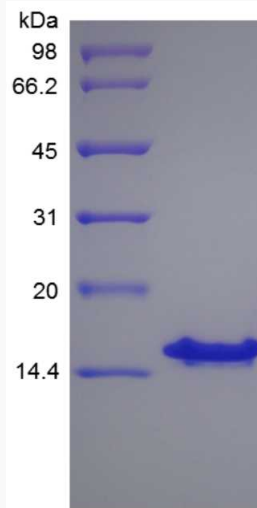
P48061


 Tel: 1-631-559-9269 1-516-512-3133

 Email: [info@creative-biomart.com](mailto:info@creative-biomart.com)  Fax: 1-631-938-8127


 45-1 Ramsey Road, Shirley, NY 11967, USA

**SDS-PAGE**



 Tel: 1-631-559-9269 1-516-512-3133

 Email: [info@creative-biomart.com](mailto:info@creative-biomart.com)  Fax: 1-631-938-8127

 45-1 Ramsey Road, Shirley, NY 11967, USA