

GMP Recombinant Porcine CXCL13 Protein, His-Tagged

Cat. No. CXCL13-01P **Lot. No.** (See product label)

SPECIFICATION

Product Overview	GMP Recombinant Porcine CXCL13 Protein, His-Tagged was expressed in Escherichia coli cell-derived in an animal component free process under cGMP guidelines.
Species	Porcine
Source	E.coli
Description	CXCL13, also known as BCA-1 (B Cell-Attracting chemokine 1) or BLC, is a recently identified new CXC chemokines. This chemokine is expressed in the stomach, spleen, liver, appendix and lymph nodes. CXCL13 can only elicit its activities through CXCR5 receptor. BCA-1/BLC is a potent chemoattractant for B lymphocytes, and induces weak chemotactic response in T cells and macrophages. It should be noticed that CXCL13 shows no activity on neutrophils and monocytes.
Form	Lyophilized
AA Sequence	VLETNDTNLKCQCLRSTSNWVPIRLIEKIQIWPPGNGCPTREVIVWMTNKTAICLNPNQ SKLLQKLINLMWRKKTSTTLPPVSKKSIA with polyhistidine tag at the N-terminus
Endotoxin	<0.1 EU per 1 µg of the protein by the LAL method.
Purity	>98% as determined by SDS-PAGE. Ni-NTA chromatography
Notes	Please use within one month after protein reconstitution.

 Tel: 1-631-559-9269 1-516-512-3133

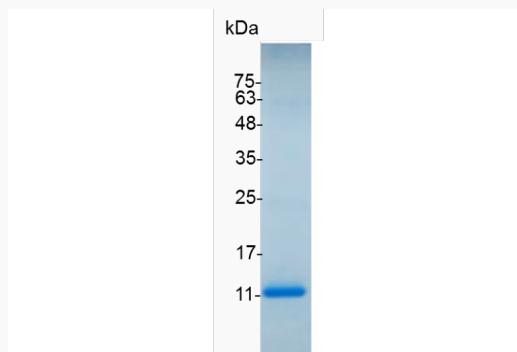
 Email: info@creative-biomart.com  Fax: 1-631-938-8127

 45-1 Ramsey Road, Shirley, NY 11967, USA

Storage	Lyophilized protein should be stored at -20°C. Upon reconstitution, protein aliquots should be stored at -20°C or -80°C.
Storage Buffer	The protein was lyophilized from a solution containing 1X PBS, pH 7.4.
Reconstitution	It is recommended to reconstitute the lyophilized protein in sterile H2O to a concentration not less than 100 µg/mL and incubate the stock solution for at least 20 min to ensure sufficient re-dissolved.

GENE INFORMATION

Gene Name	CXCL13 C-X-C motif chemokine ligand 13 [<i>Sus scrofa</i> (pig)]
Official Symbol	CXCL13
Gene ID	100524265
mRNA Refseq	XM_003129101.3
Protein Refseq	XP_003129149.1
UniProt ID	A0A287A706



 Tel: 1-631-559-9269 1-516-512-3133

 Email: info@creative-biomart.com  Fax: 1-631-938-8127

 45-1 Ramsey Road, Shirley, NY 11967, USA