

## Recombinant Human CXCL13 protein, His-Sumo-tagged

Cat. No. CXCL13-1710H Lot. No. (See product label)

### SPECIFICATION

|                         |  |
|-------------------------|--|
| <b>Product Overview</b> | Recombinant Human CXCL13 protein(O43927)(Val23-Pro109), fused with N-terminal His-Sumo tag, was expressed in E.coli.   |
| <b>Species</b>          | Human  |
| <b>Source</b>           | N-His-Sumo   |
| <b>ProteinLength</b>    | Val23-Pro109   |
| <b>Tag</b>              | N-His-Sumo   |
| <b>Form</b>             | Supplied as 0.22µm filtered solution in 0.1M Glycine, 0.3M NaCl, 0.2M L-arginine, 10%Glycerol (pH 3.0).  |
| <b>Bio-activity</b>     | Immobilized Anti-CXCL13 Antibody, hFc Tag at 5µg/ml (100µl/well) on the plate. Dose response curve for Human CXCL13, His Tag with the EC50 of 0.54µg/ml determined by ELISA. |
| <b>Molecular Mass</b>   | The protein has a predicted MW of 22.9 kDa. The protein migrates to 26-28 kDa based on Tris-Bis PAGE result.   |
| <b>Endotoxin</b>        | Less than 1EU per µg by the LAL method.  |
| <b>Purity</b>           | > 95% as determined by Tris-Bis PAGE.  |

 Tel: 1-631-559-9269 1-516-512-3133

 Email: [info@creative-biomart.com](mailto:info@creative-biomart.com)  Fax: 1-631-938-8127

 45-1 Ramsey Road, Shirley, NY 11967, USA

**Storage**

Valid for 12 months from date of receipt when stored at -80°C.; Recommend to aliquot the protein into smaller quantities for optimal storage. Please do not repeated freeze-thaw cycles.

**Reconstitution**

It is recommended that sterile water be added to the vial to prepare a stock solution of 0.2 ug/ul. Centrifuge the vial at 4°C before opening to recover the entire contents.

## GENE INFORMATION

**Gene Name**

CXCL13 chemokine (C-X-C motif) ligand 13 [ Homo sapiens ]

**Official Symbol**

CXCL13

**Synonyms**

CXCL13; chemokine (C-X-C motif) ligand 13; SCYB13, small inducible cytokine B subfamily (Cys X Cys motif), member 13 (B cell chemoattractant); C-X-C motif chemokine 13; ANGIE; ANGIE2; B cell chemoattractant; BCA 1; BLC; BLR1L; CXC chemokine BLC; B-cell chemoattractant; B-lymphocyte chemoattractant; b lymphocyte chemoattractant; small-inducible cytokine B13; B-cell-attracting chemokine 1; b cell-attracting chemokine 1; chemokine (C-X-C motif) ligand 13 (B-cell chemoattractant); B-cell-homing chemokine (ligand for Burkitts lymphoma receptor-1); small inducible cytokine B subfamily (Cys-X-Cys motif), member 13 (B-cell chemoattractant); BCA1; BCA-1; SCYB13;

**Gene ID**

10563

**mRNA Refseq**

NM\_006419

**Protein Refseq**

NP\_006410

**MIM**

605149

 Tel: 1-631-559-9269 1-516-512-3133

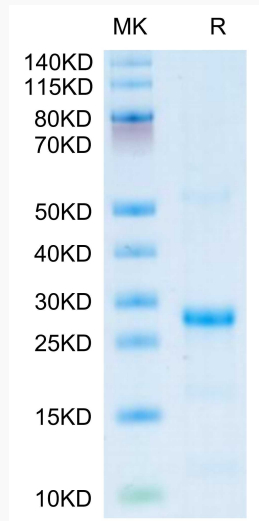
 Email: [info@creative-biomart.com](mailto:info@creative-biomart.com)  Fax: 1-631-938-8127

 45-1 Ramsey Road, Shirley, NY 11967, USA

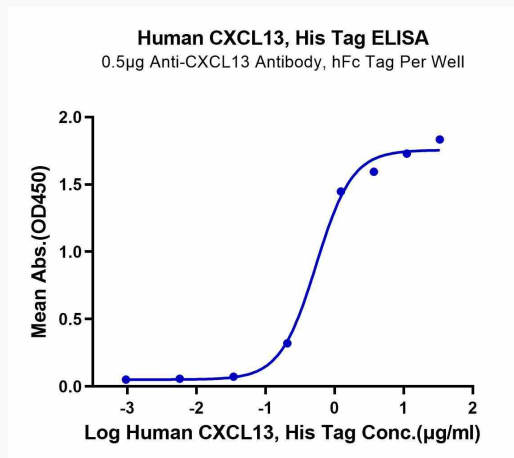
UniProt ID

O43927

Tris-Bis PAGE



ELISA



 Tel: 1-631-559-9269 1-516-512-3133

 Email: [info@creative-biomart.com](mailto:info@creative-biomart.com)  Fax: 1-631-938-8127

 45-1 Ramsey Road, Shirley, NY 11967, USA