

## Recombinant Human CXCL13 Protein, GST-tagged

Cat. No. CXCL13-2161H Lot. No. (See product label)

### SPECIFICATION

<b>Product Overview</b>	Human CXCL13 full-length ORF ( NP_006410.1, 1 a.a. - 109 a.a.) recombinant protein with GST-tag at N-terminal.
<b>Species</b>	Human
<b>Source</b>	Wheat Germ
<b>Description</b>	B lymphocyte chemoattractant, independently cloned and named Angie, is an antimicrobial peptide and CXC chemokine strongly expressed in the follicles of the spleen, lymph nodes, and Peyer's patches. It preferentially promotes the migration of B lymphocytes (compared to T cells and macrophages), apparently by stimulating calcium influx into, and chemotaxis of, cells expressing Burkitt's lymphoma receptor 1 (BLR-1). It may therefore function in the homing of B lymphocytes to follicles. [provided by RefSeq, Oct 2014]
<b>Molecular Mass</b>	39.1 kDa
<b>AA Sequence</b>	MKFISTSLLLMLLVSSLSPVQGVLEVYYTSLRCRCVQESSVFIPRRFIDRIQILPRGNG CPRKEIIVWKKNKSIVCVDPQAEWIQRMMEVLRKRSSSTLPVPVFKRKIP
<b>Applications</b>	Enzyme-linked Immunoabsorbent Assay Western Blot (Recombinant protein) Antibody Production Protein Array

 Tel: 1-631-559-9269 1-516-512-3133

 Email: [info@creative-biomart.com](mailto:info@creative-biomart.com)  Fax: 1-631-938-8127

 45-1 Ramsey Road, Shirley, NY 11967, USA

<b>Notes</b>	Best use within three months from the date of receipt of this protein.
<b>Storage</b>	Store at -80 centigrade. Aliquot to avoid repeated freezing and thawing.
<b>Storage Buffer</b>	50 mM Tris-HCl, 10 mM reduced Glutathione, pH=8.0 in the elution buffer.
<b>GENE INFORMATION</b>	
<b>Gene Name</b>	CXCL13 chemokine (C-X-C motif) ligand 13 [ Homo sapiens ]
<b>Official Symbol</b>	CXCL13
<b>Synonyms</b>	CXCL13; chemokine (C-X-C motif) ligand 13; SCYB13, small inducible cytokine B subfamily (Cys X Cys motif), member 13 (B cell chemoattractant); C-X-C motif chemokine 13; ANGIE; ANGIE2; B cell chemoattractant; BCA 1; BLC; BLR1L; CXC chemokine BLC; B-cell chemoattractant; B-lymphocyte chemoattractant; b lymphocyte chemoattractant; small-inducible cytokine B13; B-cell-attracting chemokine 1; b cell-attracting chemokine 1; chemokine (C-X-C motif) ligand 13 (B-cell chemoattractant); B-cell-homing chemokine (ligand for Burkitts lymphoma receptor-1); small inducible cytokine B subfamily (Cys-X-Cys motif), member 13 (B-cell chemoattractant); BCA1; BCA-1; SCYB13;
<b>Gene ID</b>	10563
<b>mRNA Refseq</b>	NM_006419
<b>Protein Refseq</b>	NP_006410
<b>MIM</b>	605149
<b>UniProt ID</b>	O43927

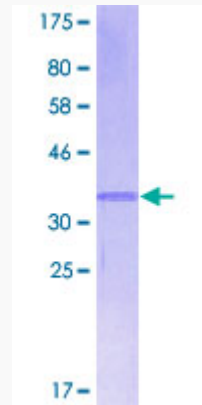
 Tel: 1-631-559-9269 1-516-512-3133

 Email: [info@creative-biomart.com](mailto:info@creative-biomart.com)  Fax: 1-631-938-8127

 45-1 Ramsey Road, Shirley, NY 11967, USA

**Quality Control**

**Testing:**



12.5% SDS-PAGE Stained with Coomassie Blue.

 Tel: 1-631-559-9269 1-516-512-3133

 Email: [info@creative-biomart.com](mailto:info@creative-biomart.com)  Fax: 1-631-938-8127

 45-1 Ramsey Road, Shirley, NY 11967, USA