

Recombinant Rat C-X-C motif chemokine ligand 13 Protein, His&SUMO tagged

Cat. No. CXCL13-50R **Lot. No.** (See product label)

SPECIFICATION

Product Overview	Recombinant Rat CXCL13 Protein (22-109aa) with N-His&SUMO tag was expressed in E. coli.
Species	Rat
Source	E.coli
ProteinLength	22-109aa
Description	Predicted to enable chemokine receptor binding activity; fibroblast growth factor binding activity; and heparin binding activity. Predicted to be involved in several processes, including cell chemotaxis; regulation of chemotaxis; and response to bacterium. Predicted to act upstream of or within lymph node development. Predicted to be located in extracellular region. Predicted to be active in extracellular space. Orthologous to human CXCL13 (C-X-C motif chemokine ligand 13).
Tag	N-His&SUMO
Molecular Mass	24.2 kDa
AA Sequence	MNWSHPQFEKSSGSSGGHHHHHHGGSGGSGSDSEVNQEAKPEVKPEVKPETHIN LKVSDGSSEIFFKIKKTTPLRRLMEAFKRQ GKEMDSLRF LYDGIRIQADQAPEDLDM EDNDIIEAHREQIGGILETHYTNLKCRC SKVSSTFINLILVDWIQVIRPGNGCPKTEIIF WTKAKKAICVNPTARWL PKVLKFVRSRSITSTPQAPVSKKRAA

 Tel: 1-631-559-9269 1-516-512-3133

 Email: info@creative-biomart.com  Fax: 1-631-938-8127

 45-1 Ramsey Road, Shirley, NY 11967, USA

Purity	> 85% by SDS-PAGE
Storage	Store it under sterile conditions at -20 to -80 centigrade. It is recommended that the protein be aliquoted for optimal storage. Avoid repeated freeze-thaw cycles.
Storage Buffer	20 mM Tris-HCl, 0.10 M NaCl, pH8.0
Concentration	0.3 mg/mL

GENE INFORMATION

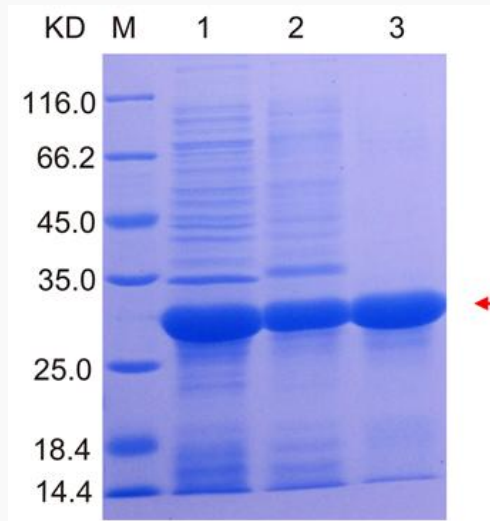
Gene Name	Cxcl13 C-X-C motif chemokine ligand 13 [Rattus norvegicus (Norway rat)]
Official Symbol	Cxcl13
Synonyms	CXCL13; chemokine (C-X-C motif) ligand 13; C-X-C motif chemokine 13
Gene ID	498335
mRNA Refseq	NM_001017496
Protein Refseq	NP_001017496
UniProt ID	Q5I0J6

 Tel: 1-631-559-9269 1-516-512-3133

 Email: info@creative-biomart.com  Fax: 1-631-938-8127

 45-1 Ramsey Road, Shirley, NY 11967, USA

**SDS-PAGE of Rat
CXCL13 fusion
protein purification**



Lane M: Protein Marker
Lane 1: Un-purified
Lane 2: Flow through
Lane 3: Elution

 Tel: 1-631-559-9269 1-516-512-3133

 Email: info@creative-biomart.com  Fax: 1-631-938-8127

 45-1 Ramsey Road, Shirley, NY 11967, USA