

Recombinant Human CXCL13 protein, hFc-tagged

Cat. No. CXCL13-5733H Lot. No. (See product label)

SPECIFICATION

Product Overview	Recombinant Human CXCL13 protein(O43927)(Val23-Per109), fused with N-terminal hFc tag, was expressed in HEK293.
Species	Human
Source	HEK293
ProteinLength	Val23-Per109
Tag	N-hFc
Form	Supplied as 0.22µm filtered solution in 50mM Tris,500mM NaCl (pH 7.4).
Bio-activity	Immobilized Human CXCL13, hFc Tag at 0.5ug/ml (100ul/well) on the plate. Dose response curve for Biotinylated Anti-CXCL13 Antibody, hFc Tag with the EC50 of 23.8ng/ml determined by ELISA.
Molecular Mass	The protein has a predicted MW of 37.6 kDa. Due to glycosylation, the protein migrates to 40-50 kDa based on Tris-Bis PAGE result.
Endotoxin	Less than 1EU per µg by the LAL method.
Purity	> 95% as determined by Tris-Bis PAGE
Storage	Valid for 12 months from date of receipt when stored at -80°C. Recommend to aliquot

 Tel: 1-631-559-9269 1-516-512-3133

 Email: info@creative-biomart.com  Fax: 1-631-938-8127

 45-1 Ramsey Road, Shirley, NY 11967, USA

the protein into smaller quantities for optimal storage. Please do not repeated freeze-thaw cycles.

Reconstitution

It is recommended that sterile water be added to the vial to prepare a stock solution of 0.2 ug/ul. Centrifuge the vial at 4°C before opening to recover the entire contents.

GENE INFORMATION

Gene Name

CXCL13 chemokine (C-X-C motif) ligand 13 [Homo sapiens]

Official Symbol

CXCL13

Synonyms

CXCL13; chemokine (C-X-C motif) ligand 13; SCYB13, small inducible cytokine B subfamily (Cys X Cys motif), member 13 (B cell chemoattractant); C-X-C motif chemokine 13; ANGIE; ANGIE2; B cell chemoattractant; BCA 1; BLC; BLR1L; CXC chemokine BLC; B-cell chemoattractant; B-lymphocyte chemoattractant; b lymphocyte chemoattractant; small-inducible cytokine B13; B-cell-attracting chemokine 1; b cell-attracting chemokine 1; chemokine (C-X-C motif) ligand 13 (B-cell chemoattractant); B-cell-homing chemokine (ligand for Burkitts lymphoma receptor-1); small inducible cytokine B subfamily (Cys-X-Cys motif), member 13 (B-cell chemoattractant); BCA1; BCA-1; SCYB13;

Gene ID

10563

mRNA Refseq

NM_006419

Protein Refseq

NP_006410

MIM

605149

UniProt ID

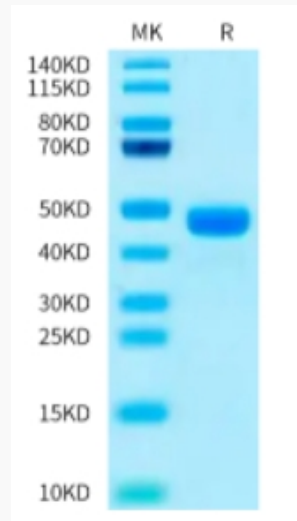
O43927

 Tel: 1-631-559-9269 1-516-512-3133

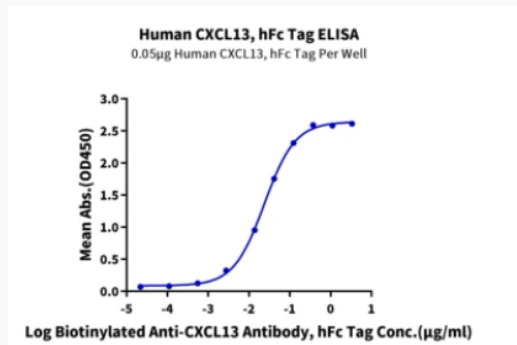
 Email: info@creative-biomart.com  Fax: 1-631-938-8127

 45-1 Ramsey Road, Shirley, NY 11967, USA

Tris-Bis PAGE



ELISA Data



 Tel: 1-631-559-9269 1-516-512-3133

 Email: info@creative-biomart.com  Fax: 1-631-938-8127

 45-1 Ramsey Road, Shirley, NY 11967, USA