

# Recombinant Human CXCL14 protein

**Cat. No.** CXCL14-90H    **Lot. No.** (See product label)

## SPECIFICATION

<b>Product Overview</b>	Recombinant Human CXCL14 protein(O95715) (Ser35-Glu111) was expressed in E. coli with a N-terminal Met.
<b>Species</b>	Human
<b>Source</b>	E. coli
<b>ProteinLength</b>	35-111 aa
<b>Form</b>	Lyophilized from sterile 100mM NaH <sub>2</sub> PO <sub>4</sub> , 1M NaCl, pH 6.5.
<b>Molecular Mass</b>	The recombinant human CXCL14 consists of 77 amino acids and predicts a molecular mass of 9.4 KDa. It migrates as an approximately 15 KDa band in SDS-PAGE under reducing conditions.
<b>Purity</b>	> 90 % as determined by SDS-PAGE
<b>Storage</b>	Store it under sterile conditions at -20°C to -80°C upon receiving. Recommend to aliquot the protein into smaller quantities for optimal storage. Avoid repeated freeze-thaw cycles.
<b>Reconstitution</b>	It is recommended that sterile water be added to the vial to prepare a stock solution of 0.2 ug/ul. Centrifuge the vial at 4°C before opening to recover the entire contents.
<b>protein Refseq-</b>	<a href="http://www.ncbi.nlm.nih.gov/protein/NP_004878.2">http://www.ncbi.nlm.nih.gov/protein/NP_004878.2</a>

 Tel: 1-631-559-9269    1-516-512-3133

 Email: [info@creative-biomart.com](mailto:info@creative-biomart.com)     Fax: 1-631-938-8127

 45-1 Ramsey Road, Shirley, NY 11967, USA

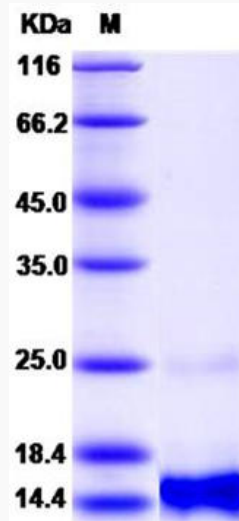
<b>Weblink</b>	
<b>Unit ID</b>	O95715
<b>Unit ID-Weblink</b>	<a href="http://www.uniprot.org/uniprot/O95715">http://www.uniprot.org/uniprot/O95715</a>
<b>GENE INFORMATION</b>	
<b>Gene Name</b>	CXCL14 chemokine (C-X-C motif) ligand 14 [ Homo sapiens ]
<b>Official Symbol</b>	CXCL14
<b>Synonyms</b>	CXCL14; chemokine (C-X-C motif) ligand 14; SCYB14, small inducible cytokine subfamily B (Cys X Cys), member 14 (BRAK); C-X-C motif chemokine 14; BMAC; bolekin; BRAK; breast and kidney; Kec; KS1; MIP 2g; NJAC; MIP-2 gamma; chemokine BRAK; tumor-suppressing chemokine; small-inducible cytokine B14; CXC chemokine in breast and kidney; small inducible cytokine subfamily B (Cys-X-Cys), member 14 (BRAK); KEC; MIP2G; MIP-2g; SCYB14; MGC10687;
<b>Gene ID</b>	9547
<b>mRNA Refseq</b>	NM_004887
<b>protein Refseq</b>	NP_004878
<b>MIM</b>	604186

 Tel: 1-631-559-9269 1-516-512-3133

 Email: [info@creative-biomart.com](mailto:info@creative-biomart.com)  Fax: 1-631-938-8127

 45-1 Ramsey Road, Shirley, NY 11967, USA

**SDS-PAGE**



 Tel: 1-631-559-9269 1-516-512-3133

 Email: [info@creative-biomart.com](mailto:info@creative-biomart.com)  Fax: 1-631-938-8127

 45-1 Ramsey Road, Shirley, NY 11967, USA