

Recombinant Rat C-X-C motif chemokine ligand 16 Protein, His&SUMO tagged

Cat. No. CXCL16-1084R **Lot. No.** (See product label)

SPECIFICATION

Product Overview	Recombinant Rat CXCL16 Protein (27-196aa) with His&SUMO tag was expressed in E. coli.
Species	Rat
Source	E.coli
ProteinLength	27-196aa
Description	Predicted to enable chemokine activity; low-density lipoprotein particle receptor activity; and scavenger receptor activity. Predicted to be involved in several processes, including T cell chemotaxis; cellular response to lipopolysaccharide; and response to interferon-gamma. Predicted to be integral component of membrane. Predicted to be active in extracellular space. Orthologous to human CXCL16 (C-X-C motif chemokine ligand 16).
Tag	N-His&SUMO
Molecular Mass	33 kDa
AA Sequence	MNWSHPQFEKSSGSSGGHHHHHHGGSGGSGSDSEVNQEAKPEVKPEVKPETHIN LKVSDGSSEIFFKIKKTTPLRRLMEAFKRQ GKEMDSLRF LYDGIRIQADQAPEDLDM EDNDIIEAHREQIGGNQGSVAGSCYCDRTIPSGTQIPPATLNHMRKYLKTFHRCQFFI RFQLQSKSVCGGSQDQWVRELVNCFEHKQCGIGHGQSFHHQKHVPQASTRIPEAT

 Tel: 1-631-559-9269 1-516-512-3133

 Email: info@creative-biomart.com  Fax: 1-631-938-8127

 45-1 Ramsey Road, Shirley, NY 11967, USA

EGKPPDTSTAVQFQSTQQSTFSPGAPSLNKELTRHWETTILPSGYGLEARPVAEAN
EKQHKQQKEPGAGAGT

Purity > 85% by SDS-PAGE

Storage Store it under sterile conditions at -20 to -80 centigrade. It is recommended that the protein be aliquoted for optimal storage. Avoid repeated freeze-thaw cycles.

Storage Buffer 20 mM Tris-HCl, 0.10 M NaCl, pH8.0

Concentration 0.7 mg/mL

GENE INFORMATION

Gene Name [Cxcl16 C-X-C motif chemokine ligand 16 \[Rattus norvegicus \(Norway rat\) \]](#)

Official Symbol [Cxcl16](#)

Synonyms CXCL16; chemokine (C-X-C motif) ligand 16; C-X-C motif chemokine 16; small-inducible cytokine B16; transmembrane chemokine CXCL16

Gene ID [497942](#)

mRNA Refseq [NM_001017478](#)

Protein Refseq [NP_001017478](#)

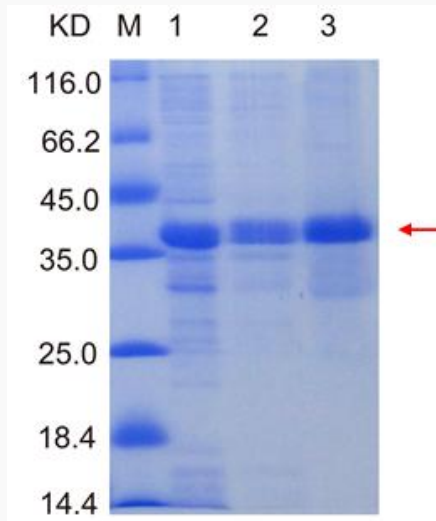
UniProt ID [Q6AXU5](#)

 Tel: 1-631-559-9269 1-516-512-3133

 Email: info@creative-biomart.com  Fax: 1-631-938-8127

 45-1 Ramsey Road, Shirley, NY 11967, USA

**SDS-PAGE of Rat
CXCL16 fusion
protein purification**



Lane M: Protein Marker
Lane 1: Un-purified
Lane 2: Flow through
Lane 3: Elution

 Tel: 1-631-559-9269 1-516-512-3133

 Email: info@creative-biomart.com  Fax: 1-631-938-8127

 45-1 Ramsey Road, Shirley, NY 11967, USA